

# Quick Start

## Business Introduction

### Process Overview

1. It is necessary to obtain basic information about the hotel, including its location, images, infrastructure, reviews, check-in policies, room types, and other products.

#### Harbour Plaza 8 Degrees ★★★★

No.199 Kowloon City Road, Tokwawan, Kowloon,Hong Kong,China [Show on Map >](#)



Hong Kong ,China

No.199 Kowloon City Road, Tokwawan,  
Kowloon,Hong Kong

[Show on Map >](#)

Amenities

[Show All >](#)

Parking1

Parking2

Taxi calling...

Swimming pool

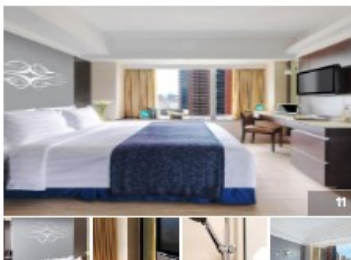
Luggage stora...

Front desk ...

Sign in and save money on members-only deals!

[Rooms](#) [Guest Reviews](#) [Policies](#) [Description](#) [Services & Amenities](#)

[Multiple Beds](#) [Single Bed](#) [Double Bed](#) [Twin Beds](#) [Breakfast Included](#) [Non-refundable](#) [Instant Confirmation](#) [Free cancellation](#)



#### Superior Room

Best price for this room type

No breakfast

Meals are not included  
Non-refundable  
Prepay Online

Provided by third party supplier 55c98c

Only 1 room(s) left

**US\$80.3**  
After tax

[Reserve](#)

2. After the user selects the desired product, they can fill out the order information. Then, it is necessary to validate the data entered by the user before submitting the order.

## Booking Information

🚩 Only 1 room left.

🔥 Book now and save US\$3.56. Lock in this room before it's gone!

### Guest Info

Rooms

Room1   +

### Special Requests Optional

The property will do its best, but cannot guarantee to fulfill all requests

### Room preference

Smoking preferences

Estimated time of arrival

If the expected arrival time is before 6:00 the next day (local time), please contact the hotel in a timely manner. The hotel phone number will be provided in your confirmation letter after successful booking.

Other requirements

- Try to provide honeymoon arrangements as much as possible
- Try to arrange high floors as much as possible

Please write your requests in English

0/200

### Cancellation Policy

After the booking is confirmed, it cannot be changed or canceled.



## Harbour Plaz... ★★★★

Thu, Aug 31 **1 night** Fri, Sep 01  
From 15:00 Before 12:00

Check-in and check-out times are in hotel's local time.

### Superior Room

- Can accommodate 2 people
- No breakfast

### Price Details

2023-08-31	1 x US\$74.37
2023-09-01 No breakfast	
Taxes & Fees	US\$7.44
Platform discounts	- US\$3.56

**Prepay Online US\$78.25**

### Important Information

Age Restrictions

Under 18 years old are not allowed to check in alone

Check-in/Check-out Times

Check-in time: after 15:00 Check-out time: before 12:00

Pets

Pets are not allowed.

Document reminder

Please bring valid identification documents for all guests. Each guest must provide an individual identification document for check-in.

- By submitting this booking, I acknowledge that I have read and agree to ly.com's [Terms of Service](#). It is advised that customers shall be responsible to ensure travel insurance is taken out in which the scope of the travel insurance should cover all the activities of the journey.

**Next Step: Final Confirmation**

3. Viewing order list information and order summary information, etc.

## Cancellation Policy

Hotel's Local Time    Your local time

Cancellation Policy    **Non-refundable** After 11:00, Aug 25, 2023

## Guest Info

Guest Name    ■■■■■n  
Email    ■■■■■@■■■■■.■■■■■  
Contact Number    +86 151 ■■■■■ 35 [Modify](#)

## Special Requests

The property will do its best, but cannot guarantee to fulfill all requests

盡量提供蜜月佈置, 盡量安排高樓層

## Invoice

After the order is successfully confirmed, you can apply for an E-receipt on the order details page, and the amount is subject to the latest one.

## How likely are you to recommend Travelgo.com to a friend or colleague?

Not likely at all    Extremely likely

0 1 2 3 4 5 6 7 8 9 10

## How can we improve your experience

(Optional) Please explain why you gave this score

Submit

4. View detailed order information, which allows for cancellation of orders, deletion of orders, rebooking, and issuing invoices.

ly.com



Help



## Thank you for your reservation >

Share your stay and review the hotel!

Booking No: 1939101135  
Confirm ID: 111  
Booking Date: 16:54, Aug 23, 2023 (Your local time)

[Check-in Voucher](#)   [Email E-receipt](#)   [Book Again](#)   [Write a review](#)

## Standard Room

[Show More >](#)

Fri, Aug 25, 2023    1 night    Sat, Aug 26, 2023  
12:00 - 17:30    Before 12:00

Check-in and check-out times are in hotel's local time.

Rooms    1  
Number of Guests    2 adults  
Meals    Include breakfast for1 (including breakfast)  
Smoking    Smokeless room  
WiFi    No network, no WiFi  
Windows    With windows

## Cancellation Policy

Hotel's Local Time    Your local time

Cancellation Policy    **Non-refundable** After 11:00, Aug 25, 2023



## Hotel Relax Inn

Zero Bridge Rajbagh, Near Modern Hospital, Srinagar, India

[Show Map >](#)

## Price Details

2023-08-25    1 x US\$0.73  
Taxes & Fees    US\$0.16  
**Prepay Online    US\$0.89**

## Important Information

### Unconventional Check-in/Check-out Times

Hotel is available Check-in time:12:00-17:30, Check-out time:before 12:00.Please note your check-in and check-out time

Hotel Tips [v](#)

## How likely are you to recommend Travelgo.com to a friend or colleague?

Not likely at all    Extremely likely

0 1 2 3 4 5 6 7 8 9 10

## API Usage Process

1. **Hotel Static Data Storage.** You can download static information in advance and store it locally to reduce the size of data packets returned when calling hotel details dynamic information, thereby improving performance.

2. **Hotel Inventory, Price, and Rate Plan Information Retrieval.** The hotel.detail API is used to obtain product, inventory, pricing information, as well as basic hotel information such as hotel name, location, pictures, etc. If static information has been downloaded, the data returned can be controlled through the Options field.
3. **Data Validation.** Performing various information checks before creating an order is to promptly provide error feedback to the user, while also improving the success rate of order creation. The hotel.data.validate API is an interface for verifying order data before creating an order. Call this API to verify room availability inventory, total price and other information before entering the order filling page.
4. **Order Creation.** When using the hotel.order.create API, relevant fields can be obtained from the return value of the hotel.detail interface and the cached static file (if cached). You can choose to complete the order and payment simultaneously or just create an order. If you choose to only create an order, you do not need to fill in payment information, but you will need to call the hotel.order.pay API to make the payment before the latest payment time.
5. **Order Operation.** You need to call the hotel.incr.order API to update the order status in real-time for processing your own business or displaying it to users. The hotel.order.create API will return the latest cancellation time, before which you can call the hotel.order.cancel API to cancel the order. Use the hotel.order.detail API to query the order details.

Get the list of hotels that users favor.

Store Static Information in Advance

City List  
hotel.static.ciy

Hotel Reviews Rating, Review Tags  
hotel.static.brand

Hotel Brand List  
hotel.static.grade

Hotel List (Static Information)  
hotel.static.list

Hotel Detail (Static Information)  
hotel.static.info

Hotel Detail (Dynamic Information)  
hotel.detail

Retrieve Inventory, Price, and Rate  
Plan Information for a Hotel

Hotel Detail (Dynamic Information)  
hotel.detail

Before Creating an Order

Data Validation  
hotel.data.validate

Order Creation

Create Order  
hotel.order.create

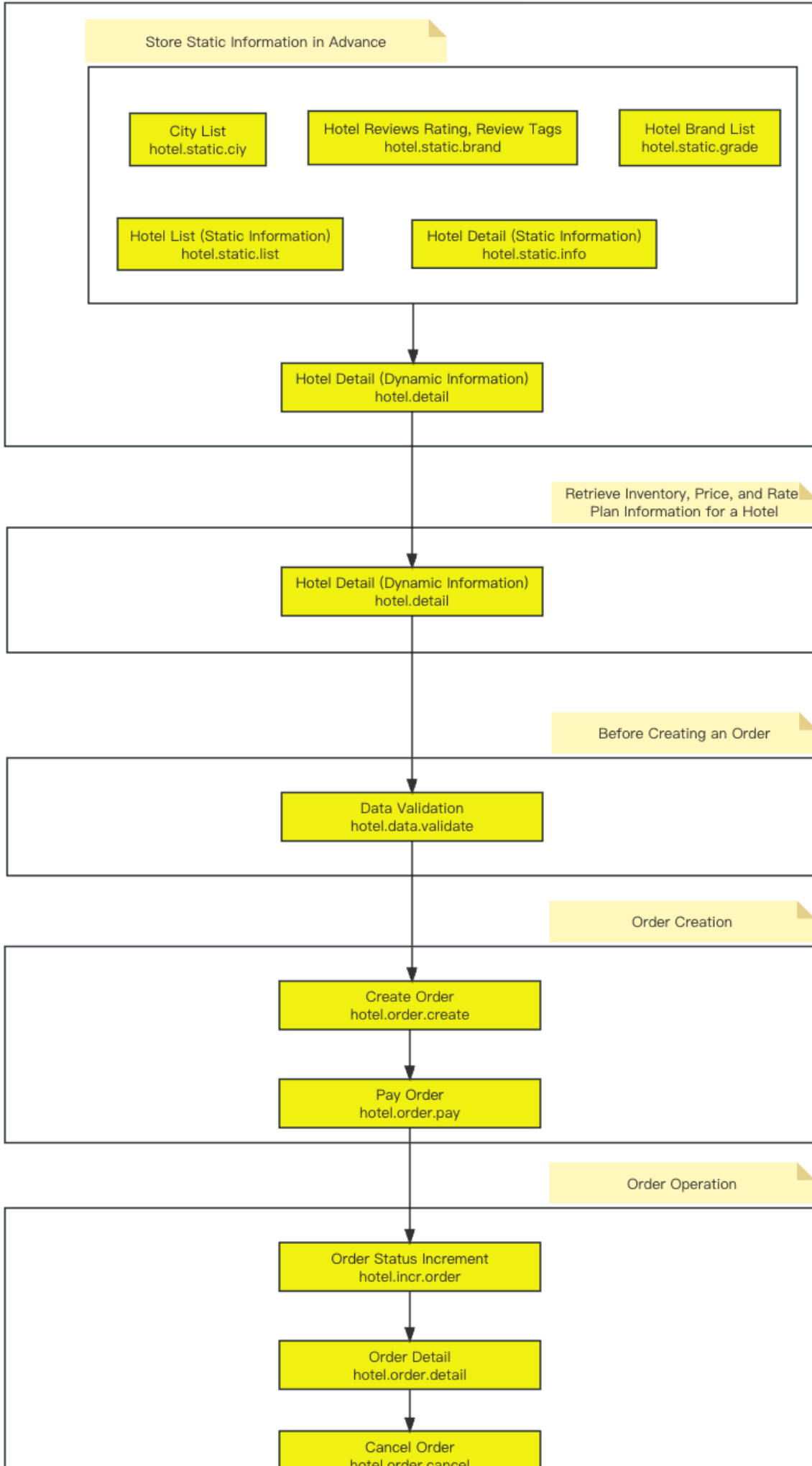
Pay Order  
hotel.order.pay

Order Operation

Order Status Increment  
hotel.incr.order

Order Detail  
hotel.order.detail

Cancel Order  
hotel.order.cancel



# Public Protocol

## Protocol Introduction

1. The interface uses **HTTPS** and requests are made using the GET method.
2. Input and output parameters are encoded using UTF-8. **The data parameter in the request body needs to be URL-encoded.**
3. Interface Domain:
  - a. Test Environment: **api-test.elong.com**
  - b. Production Environment: **api.elong.com**

### Note

1. Please contact Elong Business to add IP address to the whitelist.
2. **Please enable gzip compression for HTTPS requests by adding the request header "Accept-Encoding" as "gzip".** This can significantly reduce I/O time and bandwidth costs, with an average compression ratio of 10 or more. **The mandatory validation has been enabled, and if not enabled, the interface will return an error.** Please note that when the "content-encoding" in the response header is "gzip", the response body should be decompressed in gzip mode. Response bodies smaller than 1kb will not be compressed.

## Common Request Parameters

Parameter	Type	Remarks
user	String	The username for accessing our system can be obtained from our business team.
method	String	The API for access.
timestamp	String	Unix timestamp based on China Standard Time (UTC+8) is the number of seconds that have elapsed since January 1, 1970 (midnight UTC/GMT), not counting leap seconds.
format	String	All requests should be in JSON format.
data	String	Business parameters are the URL-encoded data used when sending requests. Please refer to the 'data' parameter below for an example of input parameters for this interface.
signature	String	Data signature is a method used to ensure the uniqueness and timeliness of requests. Signature method: md5(timestamp + md5(data + appkey) + secretKey). Please note that the result should be in lowercase, and the plus sign refers to the string concatenation operation.

		For more details, please refer to the following instructions.
--	--	---

## Data Parameters

Parameter	Comment	Type	Optional	Remarks
Version	request the version of the API	Decimal	N	The version is used to ensure compatibility with agents. The higher the version number, the more attributes are output. Agents should use a single version as much as possible. Recommended version: 1.65 or above. Please refer to the change history for the latest version.
Local	language	String	N	Optional: en_US, zh_CN
Request	request parameters	Object	N	Each interface has a different request parameters. Please refer to each interface's documentation for details.

## Common Response Parameters

Parameter	Comment	Type	Optional	Remarks
Code	response code	String	N	The value 0 indicates a successful request; a non-zero value indicates a business exception. Please

				refer to the error code for detailed information on business exceptions.
Result	response result	Object	Y	Different requests will return different results.
Guid	request unique identification	String	Y	The unique chain identification of this request is recommended to be stored for easy access to query issues with a unique identifier.

## Example

Here is an example of a request:

```
https://{host}/rest?timestamp=1488767234&format=json&method=hotel.list&signature=b
1014d1208b993bbd90f2cfba7b9c3a8&user={userid}
&data={"Version":"1.28","Local":"zh_CN",
"Request":{"ArrivalDate":"2017-3-18","DepartureDate":"2017-3-19",
"CityId":"0101","PageIndex":1,"PageSize":10,"ResultType":"1,2,4","PaymentType":"All"}}
```

Understood, if you need further examples of API requests and responses, please refer to the documentation for each specific API. It should contain detailed information on how to construct the request, what parameters are required or optional, as well as sample response data.

## Note

1. The user is provided by the business and divided into two groups: testing environment and production environment. Do not use the testing environment account to pass into the URL of the production environment, and vice versa.
2. Gzip and Keep-alive need to be enabled for HTTP requests to improve performance.
3. The request needs to be signed using the following signature method:  
md5(timestamp + md5(data + appkey) + secretKey)
4. When signature is generated, the timestamp in the md5 needs to be consistent with the timestamp in the request. The data parameter in the request (not URL encoded), appkey and secretKey are provided by the business together with the username. The data being encrypted by Md5 is in utf-8 format.
5. the request reports a signature error, please use an Md5 testing tool to verify it.
6. Here is an example of generating a signature:



```
md5(1489555911+md5({"Version":"1.28","Local":"zh_CN","Request":{"ArrivalDate":"2017-03-16","DepartureDate":"2017-03-17","CityId":"0101","PageIndex":1,"PageSize":10,"ResultType":"1,2,4","PaymentType":"All"}}+97f1f3804a9388663067f0eb04c21281)+431d6af690d323f99bd816215b30b156)
=md5(1489555911+39f6deaa247a7bffa53bb167c31d2a+431d6af690d323f99bd816215b30b156)
=d0ec6b9b98a0d56e30f33e5fc527cbac
```

## Hotel API List

Includes hotel content api for hotels and cities information, hotel booking api for hotel booking. **Please note** that for Optional column of the Request and Response parameters , Y represents that the parameter is an optional field, while N means required.

## Hotel Content API

### City List

#### Method name

hotel.static.city

Get data such as hotel cities, administrative regions, landmarks, and business circles.

#### Request Parameter

Parameter	Comment	Optional	Description
CountryType	type of country	Y	Default 0: all cities, 1: China Mainland, 2: outside China Mainland
CityIdType	type ofCity ID	Y	Default 0: all IDs, that is, searching ID + content ID; 1: only return content ID
IsNeedLocation	Whether location is needed	Y	Default:false, including Location data, administrative region, business circle, and landmark
PageSize	Number of data per page	Y	Default: 200. The range is 1~200, and the number of data to return per page
PageIndex	Page number	Y	Starting from 1

Note: Both searching IDs and content IDs supports booking api such as hotel.list to search for hotels in a city; searching IDs does not support content api such as hotel.static.list to search for hotels, only content IDs support hotel.static.list to search for hotels. The above is only valid for China Mainland cities,

## Response Results

Parameter	Comment	Type	Optional	Description
Count	Number of cities	Int	N	total count of cities
Citys	City result set	City[]	Y	Contains City nodes

### City

Parameter	Comment	Type	Optional	Description
CityId	City ID	String	N	-
CityName	Chinese name of city	String	N	-
CityNameEn	English name of city	String	Y	-
CityLatitude	City latitude	String	Y	Amap coordinate system latitude and longitude
CityLongitude	City longitude	String	N	Amap coordinate system latitude and longitude
ProvinceID	Province ID	String	Y	-
ProvinceName	Chinese name of province	String	Y	-
ProvinceNameEn	English name of province	String	N	-
CountryID	Country ID	String	N	-
CountryCode	Country code	String	Y	-
CountryName	Chinese name of country	String	N	-
CountryNameEn	English name of country	String	N	-
Locations	Location data	Location[]	Y	Contains administrative regions, business circles, and landmarks

### Location

Parameter	Comment	Type	Optional	Description
LocationID	Location ID	String	N	-
LocationName	Chinese name of location	String	N	-

LocationNameEn	English name of location	String	Y	-
LocationType	Location type	Int	N	1: Administrative region 2: Business circle 3: Landmark

## Request Example

复制代码

```
https://api-test.elong.com/rest?timestamp=1490001050&format=json
&method=hotel.static.city&signature=d19ce1e910def16453801405581c9d7c
&user={userid}&data={"Version":"1.33","Local":"zh_CN","Request":{"IsNeedLocation":true,}}
```

## Response Example

复制代码

```
{
  "Code": "0",
  "Result": {
    "Citys": [
      {
        "CityID": "0101",
        "CityName": "Beijing",
        "CityNameEn": "beijing",
        "ProvinceID": "0100",
        "ProvinceName": "Beijing",
        "ProvinceNameEn": "Beijing",
        "CountryID": 3800,
        "CountryCode": "CHN",
        "CountryName": "China",
        "CountryNameEn": "CHN",
        "Locations": 0,
        "Locations": [{
          "LocationID": "0003",
          "LocationName": "Chaoyang District",
          "LocationNameEn": "chaoyangqu",
          "LocationType": 1
        }],
        "LocationID": "010103",
        "LocationName": "Tiananmen Square / Wangfujing Business District",
        "LocationNameEn": "Tiananmen Square / Wangfujing Business District",
        "LocationType": 2
      }],
      {
        "LocationID": "154926",
        "LocationName": "Capital Airport T1 Terminal",
        "LocationNameEn": "shoudouj
```

## Notes

This api returns a lot of information. Please use it for the actual situation

## Hotel List

### Method Name

hotel.static.list

### Description

Gets the hotels in a city.

### Request Parameters

Parameter	Comment	Type	Optional	Description
StartTime	Start time	DateTime	Y	
EndTime	End time	DateTime	Y	
CityId	City ID	String	N	Only one city ID can be passed in.
PageSize	Page size	Int	Y	Default: 2000, the amount of data per page.
PageIndex	Page index	Int	Y	Starting from 1.

### Response Result

Parameter	Comment	Type	Optional	Description
Count	Hotel count	Int	N	The number of hotels that meet the conditions.
Hotels	Hotels in the city	Hotel []	Y	Contains multiple Hotel nodes.

### Hotel

Parameter	Comment	Type	Optional	Description
HotelId	Hotel ID	String	N	
HotelName	Hotel name in Chinese	String	N	
HotelNameEn	Hotel English name	String	Y	
HotelStatus	Hotel status	Int	Y	0: valid, 1: invalid, 2: deleted
Modification	Update information of hotel	String	N	0: hotel basic data, 1: room data, 2: picture data, 4: supplier data, 5: hotel review and rating data(hotel.static.grade),

				separated by ";", depending on the last update
UpdateTime	Updated time	DateTime	N	Hotel data updated time.

## Request Example

[https://api-test.elong.com/rest?timestamp=1490001050&format=json&method=hotel.static.list&signature=d19ce1e910def16453801405581c9d7c&user={userid}&data={"Version":"1.33","Local":"zh\\_CN","Request":{"CityId":"0101"}}](https://api-test.elong.com/rest?timestamp=1490001050&format=json&method=hotel.static.list&signature=d19ce1e910def16453801405581c9d7c&user={userid}&data={)

## Response Exampel

复制代码

```
{
  "Code": "0",
  "Result": {
    "Count": "300",
    "HotelIds": [
      {
        "HotelId": "10101129",
        "HotelName": "7 天优品酒店(北京国贸劲松地铁站店)",
        "HotelNameEn": "7 day superior hotel (guomao jinsong subway station)",
        "HotelStatus": 1,
        "Modification": "1,3",
        "UpdateTime": "2020-03-13 14:00:00"
      },
      {
        "HotelId": "00101010",
        "HotelName": "速 8 酒店(北京宣武门店)",
        "HotelNameEn": "Super 8 (Xuanwumen)",
        "HotelStatus": 0,
        "Modification": "1,2",
        "UpdateTime": "2020-03-13 14:00:00"
      }
    ]
  },
  "Guid": "5e3e79d7-9617-45b6-aab4-63de6bc45986"
}
```

## Note

This api returns a lot of information. Please use it according to the actual situation .

# Hotel Info

## Method Name

[hotel.static.info](#)

## Description

Gets hotel details data.

## Request parameter

parameter	comment	Type	Optional	Description
HotelId	Hotel ID	String	N	Hotel ID.
Options	optional parameter	String	Y	Other conditions, separated by commas. The Options field allows the selection of the following nodes: 1: Return the Detail node. 2: Return the Suppliers node. 3: Return the Rooms node. 4: Return the Images node. 5: Return the TelList node. When the Options field is empty, the Detail node is returned by default. When Version is greater than or equal to 1.6, the Options field must be filled out, and upgrading to a higher version is recommended. Corresponding nodes will be returned based on input parameters to improve response speed.

## Response Result

parameter	comment	Type	Optional	Description
Detail	hotel detail	Detail	N	Hotel detailed information. See Detail node for details.
Suppliers	supplier information	Supplier[]	Y	List of hotel suppliers. See Supplier node for details.
Rooms	room data	Room[]	Y	List of hotel rooms. See Room node for details.
Images	images	Image[]	Y	List of hotel images. See Image node for details.
Review	reviews of hotel	Review	Y	Not returned when Version is greater than or equal to 1.6. Please use the new interface hotel.static.grade. Hotel review data. See Review node for details.
Grade	grade of hotel	Grade	Y	Not returned when Version is greater than or equal to 1.6. Please use the new interface hotel.static.grade. Hotel rating data. See Grade node for details.

## Detail

parameter	comment	Type	Optional	Description
HotelId	Hotel ID	String	N	

HotelName	Chinese Name Of Hotel	String	N	
HotelNameEn	English Name Of Hotel	String	Y	
HotelStatus	Hotel Status	Int	Y	0: valid; 1: invalid; 2: deleted
HotelUsedName	Former Chinese Name Of Hotel	String	Y	
HotelUsedNameEn	Former English Name Of Hotel	String	Y	
HotelNameLocal	Hotel Local Chinese Name	String	Y	
HotelNameLocalEn	Hotel Local English Name	String	Y	
ShortName	Hotel Chinese Abbreviation	String	Y	
ShortNameEn	Hotel English Abbreviation	String	Y	
Address	Hotel Chinese Address	String	Y	
AddressEn	Hotel English Address	String	Y	
PostalCode	Postal Code	String	Y	

StarRate	Official Star Rating	Int	Y	<p>This is the official star rating of the hotel, setted by the government. It can take on values from 0 to 5, representing the number of stars. If it's 0, use the value in the Category node instead, but please make sure to differentiate icons based on which one you're using.</p>
----------	----------------------	-----	---	--



Category	elong Recommended Star Rating	Int	Y	The elong recommended star rating, as opposed to the official star rating. The possible values are: 0, 1, 2: Guesthouse; 3: Comfort; 4: Advanced; 5: Luxury. If both StarRate and Category are empty or 0, display "No Data".
Phone	Phone Number	String	Y	Use the data in the TelList node first. If it doesn't exist,
				use the data in this node.
Fax	Fax Number	String	Y	
Email	Hotel Email Address	String	Y	
Timezone	Hotel Time Zone	String	Y	
Licenses	Business Licenses	String[]	Y	Newly added.

EstablishmentDate	Opening Date	String	Y	
RenovationDate	Renovation Date	String	Y	
GroupId	Group ID	String	Y	
GroupName	Group Chinese Name	String	Y	
GroupNameEn	Group English Name	String	Y	
BrandId	Brand ID	String	Y	
BrandName	Brand Chinese Name	String	Y	
BrandNameEn	Brand English Name	String	Y	
IsEconomic	Economy Hotel	Int	Y	The default value is 0, where 1 represents an economy hotel.
IsApartment	Hotel Apartment	Int	Y	The default value is 0, where 1 represents a hotel apartment.

ArrivalTime	Check-in Time	String	Y	The earliest time at which guests can check in. For example, 14:00 means that guests can check in after 14:00 on the day of arrival.
DepartureTime	Check-out Time	String	Y	The latest time at which guests must check out. For example, 12:00 means that guests must check out before 12:00 on the day of departure.
GoogleLat	Google Latitude	decimal	Y	Google coordinates latitude.
GoogleLon	Google Longitude	decimal	Y	

BaiduLat	Baidu Latitude	decimal	Y	Baidu coordinates latitude.
BaiduLon	Baidu Longitude	decimal	Y	
CountryId	Country ID	String	Y	
CountryName	Country Name	String	Y	
CountryNameEn	Country English Name	String	Y	
CityId	City ID	String	Y	
CityName	City Name	String	Y	
CityNameEn	City English Name	String	Y	
CityId2	Related City	String	Y	
District	District ID	String	Y	
DistrictName	District Name	String	Y	
DistrictNameEn	District English Name	String	Y	
BusinessZone	Primary Business Circle ID	String	Y	
BusinessZoneName	Primary Business Circle Name	String	Y	
BusinessZoneNameEn	Primary Business Circle English Name	String	Y	
BusinessZone2	Affiliated Business Circle ID	String	Y	

BusinessZone2Name	Affiliated Business Circle Name	String	Y	
BusinessZone2NameEn	Affiliated Business Circle English Name	String	Y	
CreditCards	Accepted Credit Cards	String	Y	
CreditCardsEn	Accepted Credit Cards (English)	String	Y	
IntroEditor	Introduction (Chinese)	String	Y	
IntroEditorEn	Introduction (English)	String	Y	
Description	Description (Chinese)	String	Y	
DescriptionEn	Description (English)	String	Y	
AirportPickUpService	Airport Pickup Service (Chinese)	String	Y	
AirportPickUpServiceEn	Airport Pickup Service (English)	String	Y	
GeneralFacilities	Basic Facilities	Facility[]	Y	
RecreationFacilities	Recreational Facilities	Facility[]	Y	
ServiceFacilities	Service Facilities	Facility[]	Y	

BookingNoticeFacilities	Booking Notice Facilities	Facility[]	Y	New addition
HasCoupon	Allow Cashback	Boolean	Y	Hotels that do not allow cashback should not provide any cashback or similar promotions on any channels, otherwise the hotel will be penalized.
Themes	Hotel Themes	Theme[]		Reference to Theme node
RoomTotalAmount	Total Number of Rooms	Int	Y	

HotelTypes	Hotel Type	HotelType[]	Y	Hotel type IDs: 679 (hotel), 680 (apartment), 681 (guesthouse/hostel), 682 (farmhouse), 1303 (special accommodation), 1304 (youth hostel), 1305 (villa), 1306 (guesthouse), 1403 (hotel chain), 1404 (resort), 1405 (bed and breakfast), 1406 (inn), 1407 (motel), 1408 (unique cabin), 1409 (townhouse), 1410 (Japanese inn), 1411 (Moroccan-style inn), 1412 (Safari/tent house), 1413 (boat house), 1414 (cruise), 1415 (castle), 1416 (palace), 1417 (tree house), reference to HotelType node.
ServiceRank	Hotel Service Rank	ServiceRank	Y	Reference to ServiceRank node
ParkInfos	Parking Information	ParkInfo[]	Y	New addition, reference to ParkInfo node
TellList	Telephone Information	Tel[]	Y	New addition, reference to Tel node

#### Facility

Node	Name	Type	Nullable	Description
------	------	------	----------	-------------

FacilityId	Facility ID	String	N	
FacilityName	Facility Chinese name	String	Y	
FacilityNameEn	Facility English name	String	Y	

Theme

Node	Name	Type	Nullable	Description
Themeld	Theme ID	String	N	
ThemeName	Theme Chinese name	String	Y	
ThemeNameEn	Theme English name	String	Y	

HotelType

Node	Name	Type	Nullable	Description
HotelTypeId	Hotel type ID	String	N	
HotelTypeName	Hotel type Chinese name	String	Y	
HotelTypeNameEn	Hotel type English name	String	Y	

ServiceRank

Node	Name	Type	Nullable	Description
SummaryScore	Hotel service total score	String	Y	Totally out of 5 points.
InstantConfirmScore	Timely	String	Y	Percentage,



	confirmation rate			formatted as 96%.
BookingSuccessScore	Booking success rate	String	Y	Percentage, formatted as 96%.
ComplaintScore	Customer complaint rate	String	Y	Percentage, formatted as 96%.

### Review

Node	Name	Type	Nullable	Description
ReviewCount	Total number of reviews	Int	N	
ReviewGoodsCount	Good review count	Int	N	
ReviewPoorCount	Poor review count	Int	N	
ReviewScore	Score	String	N	Already calculated as a percentage. The rating score of nearby hotels can be calculated by latitude and longitude to calculate the average rating.

### Grade

Node	Name	Type	Nullable	Description
ConfirmRateOf30Mi	Order	Int	Y	

nute	confirmati on rate within 30 minutes			
GradeOfOrderCount B90	Distributio n output score in the past 90 days	Int	Y	
GradeOfOrderCount C90	C-end output score in the past 90 days	Int	Y	
GradeOfProd30	Score of products that can be sold in the past 30 days	Int	Y	
ValRateOf90	Distributio n success rate in the past 90 days	Int		

### Supplier

<b>Paramete r</b>	<b>comme nt</b>	<b>Typ e</b>	<b>Option al</b>	<b>Description</b>
SupplierI D	Supplie r ID	Stri ng	N	
HotelCod e	Corresp onding	Stri ng	N	Corresponding supplier code.

	supplier code			
Weekend Start	Week start setting	Int	N	Used for weekend price of hotel product. 0 indicates that the weekend starts on Monday.
Weekend End	Weekend end setting	Int	Y	0 indicates that it ends on Sunday, but both are 0 indicating no weekend setting; if the start is 3 and the end is 1, it means that it is a weekend setting from Wednesday to next Monday. 1 represents Monday, and 7 represents Sunday.
InstantRoomTypes	Sales room types that are instantly confirmed	String	Y	Multiple room types are separated by commas. Whether the order is an instant order is also affected by the use of inventory in the order, and can be queried through the instant interface after the final order is placed.
Status	Supplier validity status	Boolean	N	Whether it is valid; products and inventory associated with invalid suppliers cannot be sold.
InvokeType	The way the hotel uses inventory and prices	String	Y	DATA: This hotel can be obtained through both offline data interfaces and search interfaces; SEARCH: Only the search interface can obtain this hotel. When it is empty, it defaults to DATA (this field has been deprecated).

#### AvailPolicy

Paramet	comment	Type	Option	Description
---------	---------	------	--------	-------------

Parameter	comment	Type	Optional	Description
StartDate	The start date of the special policy.	Date	Y	Format: yyyy-MM-dd'T'HH:mm:ss'+08:00'; For example: 2021-09-15T00:00:00+08:00
EndDate	The end date of the special policy.	Date	Y	
Description	Special policy description (Chinese)	String	Y	E.g.: This hotel cannot receive foreign guests; E.g.: 1. Please submit extension orders if guests want to extend their stay, do not submit new orders; 2. This hotel has no parking lot.
DescriptionEn	Special policy description (English)	String	Y	

#### HelpfulTip

Parameter	comment	Type	Optional	Description
StartDate	Start date of tips	Date	Y	
EndDate	End date of warm tips	Date	Y	
Description	Warm tips description (Chinese)	String	Y	
DescriptionEn	Warm tips description (English)	String	Y	

## Room

<b>Parameter</b>	comment	<b>Type</b>	<b>Optional</b>	<b>Description</b>
RoomID	Room type ID	String	N	Corresponds to RoomId in the hotel booking api.
RoomName	Room Chinese name	String	N	
RoomNameEn	Room English name	String	Y	
Area	Room area	String	Y	
Floor	Floor	String	Y	
Broadnet Access	Internet access situation	Int	Y	0 indicates no broadband, 1 indicates broadband, 2 indicates WIFI. only for the hotels in mainland china.
Broadnet Fee	Internet access fee	Int	Y	0 indicates free, 1 indicates charge. only for the hotels in mainland china.
BedType	Bed type (Chinese)	String	Y	
BedTypeEn	Bed type (English)	String	Y	
Description	Chinese description	String	Y	Including bed type, broadband and other information, can be find in the Facilities node.
Description	English	String	Y	

onEn	description	ng		
Comments	Chinese remarks	String	Y	
CommentsEn	English remarks	String	Y	
Capacity	Maximum occupancy	Int	Y	If not provided, maybe showed on the room name: single rooms or rooms with "single" are for one person, triple rooms are for three people, and others default to two people; 7 represents more than six people; exact information can be find in Facilities node. Rooms purchased by bed are for beds, and are not related to the number of occupants here.
Amount	Number of available rooms	Int	Y	
Facilities	List of room facilities	Facility[]	Y	See Facility node.

#### Image

Parameter	comment	Type	Optional	Description
RoomID	room id of Associated room	String	Y	
Type	Image type	Int	N	1 - Restaurant; 2 - Recreation Facilities; 3 - Meeting/Conference; 5 - Exterior; 6 - Lobby/ Reception; 8 - Guest Room; 10

				- Other Facilities; 11 - Public Area; 12 - Nearby Attractions
TypeName	Image type (Chinese)	String	Y	
TypeName En	Image type (English)	String	Y	
AuthorType	Image source	String	Y	Uploaded by user or hotel: Hotel - hotel; User - user
IsCoverImage	Whether it is the main image	Boolean	Y	When the value is true, it means that this image is the main image (cover image), which can be used for display in the hotel list.
IsRoomCoverImage	Whether it is the main image of the room	Boolean	Y	When the value is true, it means that this image is the main image of the room, which can be used for display in the list.
Locations	List of image addresses	Location[]	Y	refer to Location node.

#### Location

Parameter	comment	Type	Optional	Description
Water	Whet	Int	N	0 - none, 1 - yes. The default is a

Mark	her there is a water mark			watermarked image.
Size	Size type	Int	N	Includes the following size types: 375x200, 350x350, 640x960, 800x600, 1080x800, 1140x640
Url	Image address	String	Y	

#### ParkInfo

Parameter	comment	Type	Optional	Description
title	Name	String	Y	
desc	Description	String []	Y	
type	Type	String	Y	

#### Tel

Parameter	comment	Type	Optional	Description
nationCode	Country code	String	Y	
areaCode	Area code	String	Y	
mainCode	Main number	String	N	
extCode	Extension	String	Y	



	number	g		
type	Type	String	N	1: landline; 2: mobile number

### Request example

```
https://api-test.elong.com/rest?timestamp=1490001050&format=json  
&http://method%3Dhotel.static.info/&signature=d19ce1e910def16453801405581c9d7c  
&user={userid}&data={"Version":"1.33","Local":"zh_CN","Request":{"HotelId":"90000329"}}
```

Response example

```
{
  "Code": "0",
  "Result": {
    "Detail": {
      "HotelName": "Qianyu Su Haojia Boutique Hotel",
      "Fax": "010-64689588",
      "Address": "31 Zuojia Zhuangbei Li",
      "IntroEditor": "The hotel is located in the bustling commercial district of Chaoyang District. It is adjacent to the Yan Sha business district, China International Exhibition Center (5 minutes walk), and the end point entrance and exit of the airport expressway. It is only 2.3 kilometers away from the Dongzhimen business district where the East Ring Plaza is located, and more than 20 buses pass by the hotel, making transportation extremely convenient.<br> The hotel has a beautiful Babylon sky garden and a quiet courtyard. The unique and elegant coffee house is an ideal place for you to surf the Internet and chat. Especially recommended is the table game bar project that guests love, which makes you experience the fun of staying, drinking coffee, and playing games. It is a corner where you can enjoy peace in the noisy city. Clean, efficient, fast, and caring high-standard services make you unconsciously take off the busy and tiredness in the hustle and bustle. Su Haojia has become your travel-dependent and resting harbor, and it is also a good choice for small-scale business negotiations."
    },
    "Rooms": [
      {
        "RoomId": "0001",
        "RoomName": "Boutique Double Room",
        "Area": "18",
        "Amount": 1,
        "Floor": "4-6"
      },
      {
        "RoomId": "0001",
        "RoomName": "Boutique Double Room",
        "Area": "18",
        "Amount": 1,
        "Floor": "4-6"
      }
    ],
    "Review": {
      },
    "Grande": {
      },
  }
}
```

# Hotel Booking API

## Hotel Search

### Method Name

hotel.detail

### Description

Gets hotel content (hotel introduction, room introduction, pictures, etc.) and hotel booking information (inventory, price, product, etc.) of a hotel, which can be used to display hotel information to customers.

The order creation api and data availability validation api require input of a single HotelId, RoomTypeId, and RatePlanId which can be get from this api.

About payment type:

There are two types of payment: pay at hotel and prepaid.

Pay at hotel: There are two types of pay at hotel: guarantee and non-guarantee.

Guarantee: There are two types of guarantee: full guarantee and first night guarantee. In both cases, the cancel rule must be considered, but the customer still needs to pay the room fee when they check in, and the cost of the guarantee will be refunded to the user.

Prepaid: All prepayments are full payments and also need to consider cancel rule.

Both guarantees for pay at hotel and full payments for prepaid require calling the payment function.

When accessing the hotel outside China Mainland, if there are duplicate meanings in fields, use outside-china-mainland-specific fields.

Partners can replace the method name with "hotel.crawl.detail" to crawl data for caching ,while the request parameters and response unchanged, and customer access still uses "hotel.detail", avoid affecting of flow control.

### Request Parameters

Parameter	Comment	Type	Optional	Description
ArrivalDate	Check-in Date	Date	N	Uses the format yyyy-MM-dd, for example: 2022-12-09
Departure Date	Check-out Date	Date	N	Uses the format yyyy-MM-dd, for example: 2022-12-09
HotelIds	Hotel ID List	String(100)	N	Up to 10 hotel ids, separated by commas, when room type and product conditions are not empty , only one HotelId valid .
RoomTypeId	Room Type ID	String(10)	Y	Cannot be empty when RatePlanId is passed. Corresponds to the sales room type number after V1.10.

RatePlanId	Product Code	Long	Y	Default value is 0.
PaymentType	Payment Method	Enum	Y	Default is All, All-unlimited, SelfPay-pay at hotel, Prepay-prepaid
NumberOfAdults	Number of Adults	Int	N	outside-china-mainland-specific field
NumberOfRooms	Number of Rooms	Int	Y	outside-china-mainland-specific field
ChildAges	Child Ages	Int[]	Y	outside-china-mainland-specific field
InvoiceMode	Prepaid Invoice Mode	String	Y	Elong:Elong invoice, Hotel:hotel invoice, NoSense:all Front Desk self-paid products are hotel invoices. This filter is for prepaid products.
SaveMajiald	Whether to save Littlemajiald	Boolean	Y	outside-china-mainland-specific field, when requesting for available booking, set this field to true in order to perform the available booking verification.
LatestArrivalTime	Latest Check-in Time	DateTime	Y	Used to calculate the guarantee rule result (GuaranteeResult) of pay at hotel products. When not passed, the default latest check-in time is check-in date + 1Day + 6Hour.
Options	Other Conditions	String(10)	N	Only valid for a single hotel, can be separated by commas: 1. Hotel details 2. Room type 3. Pictures 4. Currently unsellable rate plans do not appear in the results 5. Output daily price array without DRR calculation 6. Return exchange rate information ExchangeRateList 7. Return Baidu coordinates for longitude and latitude 8. Return hourly rooms only 9. Return hourly rooms and other products at the same time 10. Return GuaranteeResult if it is a pay-at-hotel product, or PrepayResult if it is a prepaid product 11. Support multiple rooms, please ensure compatibility with multiple room booking logic when passing.

## Response

Parameter	Comment	Type	Optional	Description
Count	Total number of hotels found	Int	N	
Hotels	List of hotel results	Hotel[]	Y	Contains multiple Hotel nodes.
ExchangeRateList	Exchange rate information	ExchangeRate[]	Y	Contains multiple ExchangeRate nodes.

## Hotel

Parameter	Comment	Type	Optional	Description
HotelId	Hotel ID	String(8)	N	
LowRate	Lowest price	Decimal	N	The lowest price among all products in the response of this hotel.
CurrencyCode	Currency of lowest price	Enum	Y	Refer to Currency.
BookingRules	Booking rules	BookingRule[]	Y	All booking rules for this hotel. Should be displayed for the user, and can also be used to constrain the user's selection or input in the system rules. Contains multiple BookingRule nodes.
GuaranteeResult	Guarantee result	GuaranteeResult	Y	Guarantee result node.
PrepayResult	Prepayment result	PrepayResult	Y	Prepayment result node.
ValueAdds	Value-added services	ValueAdd[]	Y	Contains ValueAdd nodes. For meals, please use the Meals node.
DrrRules	Promotion rules	DrrRule[]	Y	The prices in the response have been calculated using these rules. Only need to prompt the user with the description of the rules. Contains multiple DrrRule nodes. Example: DrrRule.
Facilities	Hotel facilities	String(50)	Y	
Rooms	Room type list	Room[]	Y	Contains Room nodes.
Detail	Hotel information element	Element	Y	Refer to Detail node.
Images	Hotel images	Image[]	Y	Contains Image nodes. Refers to static information [only contains watermarked images, specifications: 375x200, 350x350, 640x960, 800x600, 1080x800, 1140x640] (This node may not have data due to a cache server issue in the test environment).
Gifts	Gift activities	Gift[]	Y	Contains multiple Gift nodes. (It is recommended to use the GiftPackages node.)
GiftPackages	Gift package deals	GiftPackage[]	Y	Contains multiple GiftPackage nodes. (It is recommended to use this node.) Please refer to the following instructions for usage of gift package deals.
HAvailPolicies	Special hotel information prompt	HAvailPolicy[]	Y	Contains multiple HAvailPolicy nodes. V1.04 addition. Show this information to the user to facilitate booking.

### BookingRule

Parameter	Comment	Type	Optional	Description
-----------	---------	------	----------	-------------

r				
TypeCode	Rule type	Enum	N	NeedNationality – Must provide guest nationality. PerRoomPerName – You have reserved N rooms, please provide at least N guest names. ForeignerNeedEnName – This hotel requires foreign guests to provide English spelling. RejectCheckinTime – This hotel does not accept reservations from X time to Y time. Check validation time when placing an order. NeedPhoneNo – Must provide guest phone number (Please add it to the Contact node).
BookingRuleId	Booking rule ID	Long	N	RatePlan.BookingRuleIds will be associated with this.
Description	Description	String(255)	N	
DateType	Date type	Enum	Y	BookDay – Reservation date (order creation date)
StartDate	Start date	Date	Y	
EndDate	End date	Date	Y	
StartHour	Start time per day	Time	Y	Effective for each day within the date range. When TypeCode is RejectCheckinTime, it means "StartHour to EndHour" - the hotel does not accept

### GuaranteeRule

Parameter	Comment	Type	Optional	Description
GuaranteeRuleId	Guarantee rule ID	Long	N	
Description	Description	String(255)	N	If the guarantee rule exists, this field will be displayed to the user.
DateType	Date type	Enum	N	CheckInDay - Check-in date StayDay - Days in shop
StartDate	Start date	Date	N	
EndDate	End date	Date	N	
WeekSet	Valid days of the week	String(20)	Y	
IsTimeGuarantee	Whether to check in at the	Boolean	N	False: do not check in time True: need to check in time This field and the IsAmountGuarantee field that follows have a special usage. Please read the instructions carefully regarding these two fields.

	guaranteed time			
StartTime	Starting time for guaranteed check-in	Time	Y	Used to check when IsTimeGuarantee==true.
EndTime	Time the guaranteed check-in ends	Time	Y	[Supplement] When EndTime is less than StartTime, it defaults to requiring a guarantee from StartTime to 6am the next day.
IsTomorrow	Whether the guaranteed check-in end time is the next day	Boolean	Y	False for today, true for tomorrow
IsAmountGuarantee	Whether to guarantee the number of rooms	Boolean	N	False: no room quantity conditions required True: room quantity conditions required If both IsTimeGuarantee and IsAmountGuarantee are false, mandatory guarantee is required.
Amount	Number of guaranteed rooms	Int	Y	Used to check when IsAmountGuarantee==true
GuaranteeType	Guarantee type	String	Y	FirstNightCost for first night room fee guarantee FullNightCost for full room fee guarantee
ChangeRule	Change rule	Enum	Y	NoChange, not allowed to change or cancel (cannot be cancelled after placing an order regardless of whether the time has passed StartTime or not) NeedSomeDay, allowed to change/cancel, must notify XX day YY hours in advance NeedCheckin24hour, allowed to change/cancel, must notify several hours before 24:00 on check-in date
Day	Date parameter	Date	Y	When ChangeRule=NeedSomeDay, corresponds to "Allowed to change/cancel, must notify XX day YY hours in advance" in Rule 2 description.
Time	Time	Time	Y	



	parameter			
Hour	Hour parameter	Int	Y	When ChangeRule=NeedCheckinTime, corresponds to "Allowed to change/cancel, must notify several hours before the earliest check-in time" in Rule 3 description. When ChangeRule=NeedCheckin24hour, corresponds to "Allowed to change/cancel, must notify several hours before 24:00 on check-in date" in Rule 4 description.

### PrepayRule

Parameter	Comment	Type	Optional	Description
PrepayRuleId	Rule ID	Long	N	
Description	Description	String(255)	N	
DateType	Date type	Enum	N	CheckInDay: Check-in date
StartDate	Start date	Date	Y	
EndDate	End date	Date	Y	
WeekSet	Valid days of the week	String(20)	Y	
ChangeRule	Change rule	Enum	N	PrepayNoChange: Not allowed to change or cancel PrepayNeedSomeDay: Check if you can change or cancel for free (generally no penalty) Hour hours before 24:00 on the day of arrival according to the rules, and impose a penalty between Hour and Hour2 according to the rules. You cannot change or cancel after Hour2. PrepayNeedOneTime: Can be changed or cancelled free of charge before the

				appointed date and time point (DateNum + Time).
Hour	Hours before the first stage's advance	Int	Y	Used for PrepayNeedSomeDay
Hour2	Hours before the second stage's advance	Int	Y	
DateNum	Specific cancellation date part	Date	Y	Used for PrepayNeedOneTime
Time	Specific cancellation time hour part	Time	Y	
DeductFeesBefore	Whether to deduct fees before the change time	Int	Y	Used for the type of deduction before Hour of PrepayNeedSomeDay (generally no penalty). DeductFeesBefore is 1 to indicate deduction, and 0 to indicate no deduction.
DeductNumBefore	Amount or ratio deducte	Decimal	Y	

	d before the time point			
CashScaleFirst Before	Deduction type before time point	Enum	Y	Money: amount Percent: ratio FristNight: the first night
DeductFeesAfter	Whether to deduct fees after the change time	Int	Y	For the penalty types between Hour and Hour2 of PrepayNeedSomeDay. DeductFeesAfter is 1 to indicate deduction, and 0 to indicate no deduction. If CashScaleFirstAfter is FristNight, it returns -1 which is meaningless.
DeductNumAfter	Amount or ratio deducted after the time point	Decimal	Y	
CashScaleFirst After	Deduction type	Enum	Y	Money: amount ,Percent: ratio, FristNight: the first night

### GuaranteeRuleExtend

Parameter	Comment	Type	Optional	Description
GuaranteeRuleExtendId	Rule ID	Int	N	
StartDate	Start date	Date	N	The check-in date falls between the start date and end date and meets the weekly validity rule, which is considered as hitting this rule.

EndDate	End date	Date	N	
WeekSet	Valid days of the week	String	N	
GuaranteeType	Guarantee type	Int	N	0: Guarantee required 1: No guarantee required 2: Timeout guarantee
NoshowPenalty	Cancellation fee type	Int	Y	0: Follow the cancellation fee 1: Full amount (currently only 0)
GrtLatestCheckTime	Timeout guarantee time	Int	Y	Offset in minutes from 24:00 on the day relative to the check-in date. Range: [0,840]
PenaltyRuleList	Cancellation rule list	PenaltyWindowType[]	N	See PenaltyWindowType node.

### PrepayRuleExtend

Parameter	Comment	Type	Optional	Description
PrepayRuleExtendId	Rule ID	Int	N	
StartDate	Start date	Date	N	The check-in date falls between the start date and end date and meets the weekly validity rule, which is considered as hitting this rule.
EndDate	End date	Date	N	
WeekSet	Valid days of	String	N	

	the week			
NoshowPenalty	Cancellation fee type	Int	Y	0: Follow the cancellation fee 1: Full amount (currently only 0)
PenaltyRuleList	Cancellation rule list	PenaltyWindowType[]	N	See PenaltyWindowType node.

### PenaltyWindowType

Parameter	Comment	Type	Optional	Description
PenaltyType	Deduction type	Int	N	0: Percentage 1: Nights 2: First night percentage
PenaltyValue	Penalty	Double	N	
Deadline	deadline of every cancel segment	Int	N	

### ValueAdd

Parameter	Comment	Type	Optional	Description
ValueAddId	Value add service ID	String(10)	N	
TypeCode	Business code	String(2)	N	01 - Breakfast 02 - Lunch 03 - Dinner 04 - Broadband Internet 05 - Service fees 06 - Government taxes 99 - Special breakfast, effective within the valid dates and takes priority over the normal breakfast. Please refer to <a href="#">问答详情-艺龙开放平台</a> for details on how to use breakfast rules. When both special

				breakfast and normal breakfast exist, the effective breakfast is determined based on the valid dates of the special breakfast: special breakfast is effective during its valid dates, while normal breakfast is effective outside of the valid dates.
Description	Description	String(255)	N	Additional service description. Agents can display this information directly if they do not want to parse it.
IsIncluded	Whether included in room rate	Boolean	N	false - Not included true - Included. For example, when the business code is breakfast, false means that breakfast is not included, true means breakfast is included.
Amount	Quantity included	Int	Y	
CurrencyCode	Currency code	Enum	N	Refer to Currency
PriceOption	Default price option	Enum	Y	Money - Amount, Percent - Percentage, None - Invalid
Price	Price	Decimal	Y	The value represents either an amount or a percentage based on PriceOption. If the value is a percentage, it is saved as a whole number (e.g., 20% is saved as 20).
IsExtAdd	Whether to add separately	Boolean	N	Currently only meaningful for breakfast services.

ExtOption	Default option for separately added item price	Enum	Y	Money - Amount, Percent - Percentage
ExtPrice	Price of separately added item	Decimal	Y	The value represents either an amount or a percentage based on ExtOption. If the value is a percentage, it is saved as a whole number (e.g., 20% is saved as 20).
StartDate	Start date	Date	Y	Effective date for special breakfast
EndDate	End date	Date	Y	
WeekSet	Week day validity setting	String(20)	Y	

### DrrRule

Parameter	Comment	Type	Optional	Description
DrrRuleId	Promotion rule ID	Int	N	
TypeCode	Product promotion rule type	Enum	N	DRRBookAhead - Book X days in advance, discounts M amount or N% per night per room DRRStayPerRoomPerNight - Stay X

	code			<p>nights, discounts M amount or N% per night per room from the Xth night</p> <p>on&lt;br&gt;DRRStayLastNight - Stay X nights, discounts M amount or N% per night per room for the last Y nights&lt;br&gt;DRRStayTheNightAndAfter - Stay X nights, discounts M amount or N% per night per room for the Yth night and afterwards&lt;br&gt;DRRStayPerLastNight - Discounts M amount or N% per room per night for the last Y nights each time X nights are stayed&lt;br&gt;DRRStayWeekDay - Charges weekend or weekday rates according to check-in day&lt;br&gt;DRRCheckInWeekDay - Charges weekend or weekday rates according to check-in weekday</p>
Description	Description	String(255)	Y	Can be displayed to customers
DateType	Date type	Enum	N	CheckInDay - check-in date StayDay - stay dates BookDay - booking date
StartDate	Promotion start date	Date	Y	
EndDate	Promotion end date	Date	Y	
DayNum	Days in advance	Int	Y	
CheckInNum	Nights of stay required	Int	Y	
EveryCheckInNum	Nights discounted each time	Int	Y	



LastDayNum	Number of last nights to discount	Int	Y	
WhichDayNum	Nights to discount from	Int	Y	
CashScale	Discount method	Enum	Y	Cash - Amount, Money - Amount, Percent - Percentage, Scale - Percentage
DeductNum	Discount value	Decimal	Y	If CashScale is set to Percent, the value is saved as a whole number (e.g., 30% is saved as 30)
WeekSet	Weekday validity setting	String(20)	Y	Only used for DRRStayWeekDay and DRRCheckInWeekDay
FeeType	Price type	Enum	Y	WeekendFee - Weekend rates WeekdayFee - Weekday rates

## Room

Parameter	Comment	Type	Optional	Description
RoomId	Display room type ID	String(10)	N	Added in V1.10, used only to associate with static information.
NameEn	Room name in English	String	Y	
Name	Room type name	String(50)	N	
RatePlans	Product information	RatePlan[]	Y	Contains multiple RatePlan nodes.

ImageUrl	Image URL	String(255)	Y	Images contain watermarks. When the Options parameter is set to 2, images of dimensions such as 375x200, 350x350, 640x960, 800x600, and 1080x800 are returned.
Floor	Floor	String(20)	Y	When the Options parameter is set to 2, it is returned.
Broadnet	Internet situation	String(10)	Y	0 - None 1 - Free broadband 2 - Paid broadband 3 - Free WIFI 4 - Paid WIFI When the Options parameter is set to 2, it is returned.
BedType	Bed type	String(50)	Y	Please refer to the bed type list in the appendix. When the Options parameter is set to 2, it is returned.
BedDesc	Bed type description	String(255)	Y	When the Options parameter is set to 2, it is returned.
Description	Room description	String(255)	Y	
Comments	Room comments	String(500)	Y	Added in V1.04. When the Options parameter is set to 2, it is returned.
Area	Area	String(20)	Y	Added in V1.14. When the Options parameter is set to 2, it is returned.
Capacity	Maximum occupancy	String(10)	Y	Added in V1.17. If a room is sold by beds, then the number of guests refers to the number of beds purchased, not this field.
WindowTypeId	Window type ID	Int	Y	
WindowType	Window type description	String(50)	Y	The name of the window type.

## Rateplan

Parameter	Comment	Type	Optional	Description
RatePlanId	Product ID	Long	N	
RatePlanName	Product Name	String(50)	N	
Status	Sales Status	Boolean	N	Indicates whether the product and price are valid. False means this product cannot be sold. If it is true, then each node in the NightlyRate array needs to be checked for status. Only when all of them are true, can this product be sold. For more information, please refer to the following: false - not available for sale (may be due to invalid products or missing prices on some dates); true - available for sale
RoomTypeId	Sales Room Type ID	String(4)	N	Added in V1.10, used as an input parameter RoomTypeId in hotel.order.create

SuffixName	Supplier Room Type Additional Name	String(50)	Y	Added in V1.10, supplementary explanation of room type information
HotelCode	Supplier Hotel Code	String(10)	Y	Added in V1.10
SupportSpecialInvoice	Whether Support Special Invoice	Boolean	Y	true - support; false - not supported
CustomerType	Guest Type	Enum	Y	All = Unified price; Chinese = Domestic price, prompt guests "need to show mainland ID card for check-in"; OtherForeign = Foreign price, prompt guests "need to show foreign passport for check-in"; HongKong = Hong Kong, Macau and Taiwan guest price, prompt guests "need to show Hong Kong, Macao and Taiwan identity card for check-in"; ChinaGuest = Chinese Guest Price, prompt guests "need to show Chinese ID card or passport for check-in"

guestType	Applicable Crowd	String	Y	Applicable crowd of guest type: 0: No limit; 1: Other; 2: Residents holding Chinese ID cards; 3: Hong Kong and Macao residents holding home return permits; 4: Taiwan residents holding a Taiwan Compatriot Card; 5: Overseas Chinese holding a Chinese passport; 6: Foreigners holding a work permit/residence permit for Mainland China; 7: Foreigners holding non-Chinese passports Multiple values may occur above, separated by commas in English, e.g. 1,2,3
guestTypeExtend Ch	Others	String	Y	The other content in applicable crowd

CurrentAlloment	Room Quota	Int	Y	The minimum value that cannot be oversold during the stay. When greater than 0 and less than 5, it indicates that there are only a few rooms left; 0 means that there are enough rooms, and at least one room can be booked, and multiple bookings may fail
-----------------	------------	-----	---	---

InstantConfirmation	Support Instant Confirmation	Boolean	Y	Indicates whether this product supports instant confirmation. Whether the final order is instantly confirmed depends on the return value of the create order interface (recommended) or the call to the instant confirmation interface (not recommended).Note: Please contact the business department for instant confirmation use.
PaymentType	Payment Type	Enum	Y	SelfPay - pay at the front desk, Prepay - prepaid
BookingRuleIds	Corresponding Reservation Rule Number	String(100)	Y	See BookingRule node; separate multiple booking rules with English commas

isPriceLimitedProduct	Whether It is a Limited-Price Product	Boolean	N	Indicates whether this RatePlan is a limited-price product. The limited-price product must be sold according to the price specified by Yilong, that is, sell to the customer at the price specified by TotalRate. Different limited-price types have different constraints, see below PriceLimitedType field, notify business to change after access, new validation rules take effect.false - non-limited-price;true - limited-price
PriceLimitedType	Limited-Price Type	Int	N	Binary bit represents various limited-price conditions, 0 means non-limited-price, see below



GuaranteeRuleIds	Corresponding Guarantee Rule Number	String(100)	Y	The associated guarantee rule number is separated by commas. Only need to pay attention when PaymentType is SelfPay. In api versions less than 1.5
PrepayRuleIds	Corresponding prepaid rule number	String(100)	Y	The corresponding prepaid rule number, separated by commas when multiple. Only need to pay attention when PaymentType is Prepay. In API version less than 1.5, only one rule number will be associated, but there is also a certain probability that there will be two, which is caused by dirty data.

GuaranteeRuleExt endIds	Corresponding new guarantee rule ID	String(100)	Y	The corresponding new guarantee rule number, separated by commas when multiple. Only need to pay attention when PaymentType is SelfPay. It is recommended to use the GuaranteeResult node directly.
----------------------------	---	-------------	---	---

PrepayRuleExtend Ids	Corresponding new prepaid rule ID	String(100)	Y	The corresponding new prepaid rule number, separated by commas when multiple. Only need to pay attention when PaymentType is Prepay. It is recommended to use the PrepayResult node directly.
DrrRuleIds	Corresponding promotion rule number	String(100)	Y	-

ValueAddIds	Corresponding value-added service number	String(100)	Y	Use these IDs to find the corresponding rules in the above rule arrays. Separated by commas when multiple. Breakfast is subject to ValueAddIds.
GiftIds	Gift ID	String(100)	Y	Please associate with Gifts below.
PkgProductIds	Gift package combo ID	String	Y	Multiple gift packages may be associated, so this field represents a combination of multiple IDs, separated by commas between multiple IDs, for example: 1,2,3, associated with GiftPackages

Meals	New meal node	Meals	N	See Meals node
HAvailPolicyIds	Special information prompt number for hotel	String(100)	Y	Added in V1.04, associated with Hotel.HAvailPolicys
ProductTypes	Product feature type	String(20)	Y	Addable using commas, current values: 3-Flash sale, 4-Hourly room, 5-Mobile exclusive, 6-Boutique products, need to provide the guest's ID card when booking (the Identification field contains this logic, and for products related to identity verification, they can be processed uniformly according to the Identification field), 17-Sightseeing hotel packages, can only be sold with scenic spot tickets, not spit out by default, 25-Dormitory bed (the dormitory bed type is no longer valid here, please check the Name field of RatePlanName or Room node for bed-type judgment, where if either field contains the word "bed", it is a dormitory bed), 99-Unknown, used internally by Elong, generally ignored by agents

sellChannels	Distribution channel	String(20)	Y	Added in V1.51. Addable using commas, current values: 1-Distribution exclusive, used internally by Elong, generally ignored by agents
IsLastMinuteSale	Whether it is today's special offer (i.e. last-minute room)	Boolean	Y	When IsLastMinuteSale== true, then check StartTime and EndTime

NeedIdNo	Whether identification number needs to be provided	Boolean	Y	<p>If it is a boutique product, you cannot judge by this field. Whether true or false, the ID must be passed in. If it is not a boutique product, it refers to whether the guest's ID card information needs to be provided when booking the RatePlan. If this field is not empty and is true, the ID card must be passed in upon successful order (deprecated, please refer to the new field Identification for identity verification type)</p>
----------	--	---------	---	--

Identification	Identity verification type	Int	N	0-No special verification requirements (default value), 1-At least one ID card is required for the entire order, 2-At least one document is required for each room in the order, 3-At least one ID card is required for each room in the order, 4-One ID card is required for each guest, 5-At least one ID card is required for the entire order and the guest who booked must stay in person (More verification types may be added later. It is recommended to filter products that are not included in the types given in the document.)
StartTime	Start time of the last-minute room	Time	Y	The start time when the last-minute room can be sold every day. Valid only when IsLastMinuteSale is true
EndTime	End time of the last minute room	Time	Y	The end time when the last-minute room can be sold every day



MinAmount	Minimum booking quantity	Int	Y	Default value: 1.
MinDays	Minimum number of days stay	Int	Y	Default value: 1.
MaxDays	Maximum number of days stay	Int	Y	Default value: 365.
MaxCheckinRooms	Maximum number of rooms allowed	Int	Y	Added in version v1.35, specifies the maximum number of rooms that can be booked per order. There are cases where multiple rooms cannot be booked in one order but single rooms can be booked multiple times, this is caused by this field. When the room availability changes, call <code>hotel.room.change</code> or <code>hotel.data.booking</code> to get the latest product information. Please pass in Options as 13 when supporting multiple rooms.
MinAdvHours	Minimum hours to book in advance	Int	N	Calculated based on 23:59:59 of <code>checkInDate</code> .
MaxAdvHours	Maximum hours to book in advance	Int	N	-

TotalRate	Total price	Decimal	N	Can be directly displayed to customers after calculating with DRR. A price of -1 indicates that it cannot be sold.
AverageRate	Daily average price	Decimal	N	-
AverageBaseRate	Daily average price before promo	Decimal	Y	Added in version 1.08.
CurrencyCode	Currency	Enum	Y	Refer to Currency.
Coupon	Same promotion amount	Decimal	Y	Same promotion amount.
NightlyRates	Array of daily prices	NightlyRate []	Y	Contains multiple NightlyRate nodes.
InvoiceMode	Invoice mode for prepaid product	String	N	Only used for invoice issuance of prepaid products. Added in version V1.11.

CooperationType	Hotel contract type	int	Y	Added in version v1.27, 1 for direct signing, 2 for non-direct signing, 0 for unknown.
BookingChannels	Sales channels	String	Y	Added in version v1.23, comma-separated list of numbers (if only 3 appears, it means it is only sold on mobile). Possible values: 1-Online (ordinary PC access Web), 2-Offline (call center, store), 3-Mobile (Mobile App, H5).

earliestToliveTime	Earliest check-in time	String(6)	Y	<p>Added in version V1.32. For hourly room products. The length of stay stayTime is the maximum actual length of stay for guests. Agents need to calculate the actual length of stay based on the check-out time minus the current time. If the end time is less than the start time, it means the end time is the next day. Please note that hourly rooms have available sales times, with earliestToliveTime as the start time and latestToliveTime-stayTime as the end time. Bookings outside of the available sales time range will not be accepted, and the latest check-in time for hourly rooms is the end of the stay time. The latest reservation time for hourly rooms is the end of the stay time minus 1 hour, and products that exceed this time will not be provided during real-time searches.</p>
latestToliveTime	Latest check-out time	String(6)	Y	-
stayTime	Length of stay	String(2)	Y	-
xStayPeopleNum	Number of people allowed to stay	String	Y	Additional information about the room type.
xStaySex	Allowed gender	String	Y	-
xBedType	Bed type	String	Y	-
xFloor	Floor	String	Y	-
xOrientation	Orientation	String	Y	-
xUserDefined				

HotelLevel	Hotel rating	String	Y	Added in version V1.34 1: Special, 2: Gold, 3: Silver, 4: Blue, 0: Non-rated
majia_id	Unique product identifier	String	Y	Product unique identifier, required for H5 or mini-program jump mode, requires contacting business to open permissions. Please do not pass this value into Littlemajiaid below.

Littlemajiaid	Unique product identifier (used for API orders)	String	Y	Product unique identifier, used when creating orders through the hotel.order.create interface (domestic hotel majia IDs no longer have a 30-minute limit). When making requests for international hotels, this field identifies the product.
GoodsUniqId	Unique product identifier	String	Y	Product unique identifier, used when creating orders through the hotel.order.create interface. When making requests for international hotels, this field identifies the product.

DayPromotions	Daily promotion details collection	DayPromotion[]	Y	Data is only available when promotion permission (Zhenxuan Teohui) is enabled. See DayPromotion.
PromotionFlags	Collection of promotional activities	PromotionFlag[]	Y	Data is only available when promotion permission (Zhenxuan Tehui) is enabled. This data aggregates daily promotional activities. See PromotionFlag.

isPromotion	Whether it is a promotion product	Boolean	Y	Indicates whether it is a promotional product (Zhenxuan Teohui). When true, LittleMajiald and GoodsUniqlId are required for Hotel booking api
NeedMajiald	Whether a majia ID needs to be returned	Boolean	Y	When NeedMajiald is true, LittleMajiald and GoodsUniqlId are required for hotel booking api
UsedPromotionValues	Used Tongcheng promotion type	UsedPromotionValue[]	Y	Contains multiple UsedPromotionValue nodes. See UsedPromotionValue.
InternetFilter	Internet standardization	Int	Y	Used for Internet standardization (outside-china-mainland-specific field).



BoardFilter	Breakfast standardization	Int	Y	Used for breakfast standardization (outside-china-mainland-specific field).
PrepayResult	Prepayment result node	PrepayResult	N	Refer to PrepayResult node.
GuaranteeResult	Pay-on-arrival result node	GuaranteeResult	N	Refer to GuaranteeResult node.
RoomSquareMetres	Room area	String	Y	outside-china-mainland-specific field.
TaxAndServiceFee	Tax and service fee in original currency	Decimal	Y	Deprecated, please use Rate and MinRate in NightlyRate node instead.
TaxAndServiceFeeRMB	Tax and service fee in RMB	Decimal	Y	
BedDescription	Bed type description	String	Y	outside-china-mainland-specific field.
BedTypeAssociationalFilter	Standardized bed type description	String	Y	Bed type text after standardization - bed type grouping, outside-china-mainland-specific field.
HasWindow	Whether there is a window	Boolean	Y	outside-china-mainland-specific field.
SmokingDesc	Smoking preference	String	Y	outside-china-mainland-specific field.

	description			
Board	Meal plan	Element	Y	Refer to Board node.
RoomChildAge	Age of children allowed to stay in the room	Int	Y	outside-china-mainland-specific field.
RoomMaxPax	Maximum number of people allowed to stay in the room	Int	Y	outside-china-mainland-specific field.
AdultOccupancyPerRoom	Maximum number of adults allowed to stay in the room	Int	Y	outside-china-mainland-specific field.
ChildrenOccupancyPerRoom	Maximum number of children allowed to stay in the room	Int	Y	outside-china-mainland-specific field.
CheckInInstructions	Check-in instructions	String	Y	International
ExtraPersonFee	Extra person fee (surcharge)	Decimal	Y	outside-china-mainland-specific field.
ExtraPersonFeeRMB	Extra person fee (surcharge in RMB)	Decimal	Y	outside-china-mainland-specific field.
BedGroups	Bed type information	InterBedGroup[]	Y	Refer to InterBedGroup node.
InternetDesc	Internet description	String	Y	outside-china-mainland-specific field.

SupplierId	Supplier ID	String	Y	outside-china-mainland-specific field.
SubSupplierId	Secondary supplier ID	String	Y	outside-china-mainland-specific field.
ShopperProductId	Shopper ID of the product library	String	Y	outside-china-mainland-specific field.
AdditionalTax	Additional tax and service fee	AdditionalTax	Y	Refer to AdditionalTax node.

### NightlyRate

Parameter	Comment	Type	Optional	Description
Date	Date of the day	Date	N	
Member	Member price	Decimal	N	Calculated by DRR and can be directly displayed to customers. A price of -1 means it cannot be sold.
Cost	Settlement price	Decimal	N	Only available for prepaid products in settlement mode, returns -1 otherwise.
Status	Inventory status	Boolean	N	Indicates whether inventory is available on that day. See status.
AddBed	Additional bed price	Decimal	Y	-1 means no additional bed can be added.
Basis	Original price	Decimal	Y	The original price that has not been calculated by DRR. Returns when Option contains 5.
Breakfast Count	Breakfast quantity	Int	Y	Added in V1.25, indicates the number of breakfasts included in the room rate for that day. The breakfast quantities for the same room type and product may vary from day to day due to special breakfast arrangements. Refer to ValueAdd node.
coupon	Tongcheng promotional amount	Decimal	Y	Tongcheng promotional amount for each day added in version V1.29.
Rate	Nightly room rate (including taxes)	Decimal	N	outside-china-mainland-specific field.

	and fees)			
MinRate	Minimum room rate (excluding taxes and fees)	Decimal	N	outside-china-mainland-specific field.

#### UsedPromotionValue

Parameter	Comment	Type	Optional	Description
PromotionTypeid	Promotion type ID	Int	N	1: Cash back; 9: Discount; 10: Normal coupon cash back; 11: Normal coupon discount; 62: Full coupon cash back; 63: Full coupon discount.
PromotionValue	Discount amount	Decimal	N	

#### Detail

Parameter	Comment	Type	Optional	Description
HotelName	Hotel name	String(100)	N	
StarRate	Official star rating of the hotel	Int	N	0: unrated; 1: one-star; 2: two-star; 3: three-star; 4: four-star; 5: five-star. When it is 0, Category values are used for display, but please use different icons.
Category	Elong's recommended level	Int	N	0, 1, 2: hostel; 3: comfortable; 4: high-end; 5: luxury; A: apartment.
Latitude	Latitude coordinate	String(20)	Y	Default returns a Google coordinate system. When option 8 is added to the request, output is returned in Baidu coordinates.
Longitude	Longitude coordinate	String(20)	Y	Please contact the corresponding vendor to obtain the method of conversion for other coordinate systems.
Address	Hotel address	String(255)	Y	
Phone	Front desk phone number	String(20)	Y	
ThumbNailUrl	Cover image URL	String(255)	Y	
City	City ID	String(20)	Y	

CityName	City name	String(50)	Y	Added in V1.16. If empty, associate with ID and GEO data.
District	District ID	String(20)	Y	
DistrictName	District name	String(50)	Y	Added in V1.16. If empty, associate with ID and GEO data.
BusinessZone	Commercial district ID	String(20)	Y	
BusinessZoneName	Commercial district name	String(50)	Y	Added in V1.16. If empty, associate with ID and GEO data.
Review	Review	Element	Y	See Review node.
Features	Special features	String(max)	Y	
GeneralAmenities	Facilities and services	String(max)	Y	
Traffic	Traffic conditions	String(max)	Y	
Description	Hotel description	String(max)	Y	Brief introduction and description of the hotel.
HotelNameEn	English hotel name	String	Y	outside-china-mainland-specific field.
AddressEn	English address	String	Y	outside-china-mainland-specific field.
CheckInTime	Check-in time	String	Y	
CheckOutTime	Check-out time	String	Y	
HotelCountryName	Country name	String	Y	outside-china-mainland-specific field.
HotelCountryCode	Country code	String	Y	outside-china-mainland-specific field.
HotelCountryId	Country ID	Int	N	outside-china-mainland-specific field.
HotelPolicy	Hotel policy	String	Y	outside-china-mainland-specific field.

## Review

Parameter	Comment	Type	Optional	Description
Good	Number of positive	Int	N	

	reviews			
Poor	Number of negative reviews	Int	N	
Count	Total number of evaluations	Int	N	
Score	Positive review rate	String(10)	Y	If there is a "%" sign, it means that it has been calculated as such (for example, 94%); if there is no "%" sign, it is a numerical value that needs to be processed manually (for example, 0.94).

## Image

Parameter	Comment	Type	Optional	Description
Type	Image Type	Element	N	1 - Restaurant 2 - Recreation Facilities 3 - Meeting/Conference 5 - Exterior 6 - Lobby/Reception 8 - Guest Room 10 - Other Facilities 11 - Public Area 12 - Nearby Attractions
IsCoverImage	Whether it is a hotel cover image	String	Y	String type, when "true" means all Location are the cover images of the hotel, empty or "false" means it's not a hotel cover image
IsRoomCoverImage	Whether it is a room type cover image	String	Y	String type, when "true" means all Location are the cover images of the corresponding room type in RoomId, empty or "false" means it's not a room type cover image
RoomId	Room Type ID	String (255)	N	
Locations	Image URLs	Location[]	Y	Refer to Location node

## Location

Parameter	Comment	Type	Optional	Description
SizeType	Image Size	Type	N	1: jpg image, with fixed long side of 350, scaled image with fixed long side of 350 (used for detail page image)

				display) 7: png image, scaled image with fixed long side of 640 8: Image size of 1080x800 9: Image size of 1140x640 10: Image size of 800 x 600 11: Image size of 960 x 640 12: Image size of 375 x 200
WaterMark	Whether there is a watermark	Boolean	N	Default is a watermarked image
Url	Image URL	String(255)	N	

### GiftPackage

Parameter	Comment	Type	Optional	Description
PkgProductId	Gift package ID	Long	N	Associated with RatePlan.PkgProductids
PkgType	Gift package type	Int	N	0: Gift Package, 1: Package
PkgProductName	Gift package name	String	Y	
RuleDescriptionAdditional	Special instructions for gift package	String	Y	
Pictures	Gift package images	Picture[]	Y	Refer to Picture node
XProducts	List of X products	XProduct[]	Y	Refer to XProduct node

### XProduct

Parameter	Comment	Type	Optio	Description
-----------	---------	------	-------	-------------

			<b>nal</b>	
XProductId	X product ID	Long	N	X product is a specific gift package
XProductName	X product name	String	N	
TypeName	X product type	String	Y	Two types: "Food" and "Experience"
Quantity	X product quantity	String	Y	
ReceptionTimes	X product reception time	String	Y	
Capacity	X product capacity	String	Y	
BookingPhone	X product booking phone number	String	Y	
AppointmentPolicy	X product reservation policy	String	Y	

### Picture

<b>Parameter</b>	<b>Comment</b>	<b>Type</b>	<b>Optional</b>	<b>Description</b>
ImgIndex	Gift package image sequence	Int	N	
ImgUrl	Gift package	String	N	



	image link		
--	------------	--	--

## Gift

Parameter	Comment	Type	Optional	Description
GiftId	Gift ID	Long	N	Associated with RatePlan.GiftId
GiftDescription	Gift subtitle	String	Y	Description of gift subtitle
Description	Description	String	N	Description of gift
RelatedProducts	List of related products	RelatedProducts[]	Y	RelatedProducts node
StartDate	Effective start date of gift	Date	N	In the format of yyyy-MM-dd'T'HH:mm:ss+08:00, for example: 2018-11-02T00:00:00+08:00
EndDate	Effective end date of gift	Date	N	In the format of yyyy-MM-dd'T'HH:mm:ss+08:00, for example: 2018-11-02T00:00:00+08:00
DateType	Date type	Enum	N	CheckinDate: Check-in date BookingDate: Reservation date StayDate: Stay date
WeekSet	Weekday setting	String(20)	N	
GiftContent	Event content	String(2000)	N	
GiftTypes	Gift types	String(20)	N	1 - Gift Package with Fruit Plate 3 - Gift Package with Fruits 4 - Gift Package with Drinks 5 - Gift Package with Fine Arts 6 - Other Gift Packages 7 - Late check-out till 1pm 8 - Late check-out till 2pm 9 - Late check-out till

				<p>3pm&lt;br&gt;10 - Other late check-out&lt;br&gt;11 - Dining with Lunch&lt;br&gt;12 - Dining with Dinner&lt;br&gt;13 - Dining with Afternoon Tea&lt;br&gt;14 - Dining Voucher&lt;br&gt;15 - Other dining packages&lt;br&gt;16 - Tourist Tickets with Scenic Spots&lt;br&gt;17 - Tourist Tickets with Performances&lt;br&gt;18 - Other tourist tickets&lt;br&gt;19 - Discounts/Coupons with In-House Discounts/Coupons&lt;br&gt;20 - Discounts/Coupons with External Discounts/Coupons&lt;br&gt;21 - Other discounts/coupons&lt;br&gt;22 - Transportation with Pickup from Station&lt;br&gt;23 - Transportation with Pickup from Airport&lt;br&gt;24 - Transportation with Drop-off at Station&lt;br&gt;25 - Transportation with Drop-off at Airport&lt;br&gt;26 - Transportation with Direct Shuttle to Scenic Area&lt;br&gt;27 - Other transportation&lt;br&gt;28 - Others (please specify in WayOfGivingOther field)&lt;br&gt;Note: This field is deprecated since version 1.52, please use the GiftInfos field. For versions before 1.52, this field is still in use.</p>
GiftInfos	New gift types	GiftInfo[]	Y	Refer to the GiftInfo field
HourNumber	Hour number	Int	Y	
HourType	Hour number type	Enum	Y	<p>Hours24: all day, 24 hours for gift delivery&lt;br&gt;XhourBefore: deliver the gift package before X o'clock&lt;br&gt;XHourAfter: deliver the gift package after X o'clock</p>
WayOfGiving	Way of gift delivery	Enum	N	<p>EveryRoom: one gift package per room&lt;br&gt;EveryRoomPerDay: one gift package per room per night&lt;br&gt;Other: other, refer to the description in the WayOfGivingOther field</p>

WayOfGiving Other	Specific way of gift delivery for "Other"	String(20)	Y	The name of the gift activity when the way of gift delivery is other
GiftValue	Gift package value	Double	Y	The estimated total value of gift package and package

### RelatedProducts

Parameter	Comment	Type	Optional	Description
RoomTypeIds	List of supplier room type IDs	String	N	A comma-separated list of supplier room type IDs
RatePlanId	Rate plan ID	Integer	N	

### EffectiveDates

Parameter	Comment	Type	Optional	Description
StartDate	Effective start date of gift	Date	N	In the format of yyyy-MM-dd'T'HH:mm:ss+08:00, for example: 2018-11-02T00:00:00+08:00
EndDate	Effective end date of gift	Date	N	In the format of yyyy-MM-dd'T'HH:mm:ss+08:00, for example: 2018-11-02T00:00:00+08:00

### HAvailPolicy

Parameter	Comment	Type	Optional	Description
Id	Hint ID	String(20)	N	Associated with RatePlan.HAvailPolicyIds
AvailPolicyText	Hint content	String(1024)	N	

AvailPoli cyStart	Start date of hint	DateTi me	N	
AvailPoli cyEnd	End date of hint	DateTi me	N	

### GiftInfo

Param eter	Comm ent	Type	Optional	Description
GiftInfo	Gift level ID	Long	N	1. Gift package 2. Late check-out 3. Dining 4. Tourist tickets 5. Discounts/Coupons 6. Transportation 7. Others
GiftSub Infos	Second -level gift conten t	GiftS ublInf o[]	N	Refer to the GiftSubInfo node

### GiftSubInfo

Paramete r	Comment	Type	Optio nal	Description
SubInfo	Sub-gift level ID	Inte ger	N	1. Gift Package with Fruit Plate 3. Gift Package with Fruits 4. Gift Package with Drinks 5. Gift Package with Fine Arts 6. Other Gift Packages 7. Late check-out till 1pm 8. Late check-out till 2pm 9. Late check-out till 3pm 10. Other late check-out 11. Dining with Lunch 12. Dining with Dinner 13. Dining with Afternoon Tea 14. Dining Voucher 15. Other dining packages 16. Tourist Tickets with Scenic Spots 17. Tourist Tickets with Performances 18. Other tourist tickets 19. Discounts/Coupons with In-House

				<p>Discounts/Coupons&lt;br&gt;20. Discounts/Coupons with External Discounts/Coupons&lt;br&gt;21. Other discounts/coupons&lt;br&gt;22. Transportation with Pickup from Station&lt;br&gt;23. Transportation with Pickup from Airport&lt;br&gt;24. Transportation with Drop-off at Station&lt;br&gt;25. Transportation with Drop-off at Airport&lt;br&gt;26. Transportation with Direct Shuttle to Scenic Area&lt;br&gt;27. Other transportation&lt;br&gt;28. Others (please specify in WayOfGivingOther field)&lt;br&gt;Note: 1-6 correspond to GiftInfo node's 1, 7-10 correspond to GiftInfo node's 2, 11-15 correspond to GiftInfo node's 3, 16-18 correspond to GiftInfo node's 4, 19-21 correspond to GiftInfo node's 5, 22-27 correspond to GiftInfo node's 6, and 28 corresponds to GiftInfo node's 7.</p>
--	--	--	--	---

#### ExchangeRate

Parameter	Comment	Type	Optional	Description
CurrencyCode	Currency Code	String	N	
Rate	Rate Value	Decimal	N	Rate of converting corresponding currency to RMB

#### DayPromotion

Parameter	Comment	Type	Optional	Description
Date	Date	Date	Y	
Promotions	Daily Promotion Details	Promotion[]	Y	Daily promotion details, can contain multiple promotions such as "Daily Specials" and "Exclusive Club". Multiple promotions will be used cumulatively. See Promotion Node.

#### Promotion

Parameter	Comment	Type	Optional	Description
Promotion	Promoti	Integ	N	0: Undefined, 1: Daily specials, 2: New customer

Type	on Type	er		discount, 3: Exclusive club, 4: Other promotions, 5: Equity cloud
PriceDiscountValue	Discounted Selling Price	Decimal	N	Discounted selling price
PromotionId	Promotion Activity ID	Long	N	Promotion activity ID. Use this ID to associate with PromotionFlag's PromotionId to obtain specific activity tags.

### PromotionFlag

Parameter	Comment	Type	Optional	Description
PromotionId	Promotion Activity ID	Long	N	Promotion activity ID.
PromotionTag	Promotion Activity Tag	String	Y	Promotion activity tag. This field and its corresponding value are not returned for policies that are either free or non-cancellable.

### Board

Parameter	Comment	Type	Optional	Description
BreakfastIncluded	Includes Breakfast	Boolean	Y	outside-china-mainland-specific field
HalfboardIncluded	Includes Half-board	Boolean	Y	outside-china-mainland-specific field
FullboardIncluded	Includes Full-board	Boolean	Y	outside-china-mainland-specific field
Boards	Meal Details	Element	Y	Refer to BoardDetail Node

### BoardDetail

Parameter	Comment	Type	Optional	Description
Description	Description	String	Y	outside-china-mainland-specific field
Count	Meal Count	Int	Y	outside-china-mainland-specific field
type	Meal Type	Int	Y	Meal type - 1: Breakfast; 2: Lunch; 3: Dinner; 0: Unknown meal type; outside-china-mainland-specific field
BoardDesc	Meal Description	String	Y	outside-china-mainland-specific field

### InterBedGroup

Parameter	Comment	Type	Optional	Description
BedGroupId	Bed Type Information ID	String	Y	outside-china-mainland-specific field
BedGroupDesc	Bed Type Information Description	String	Y	outside-china-mainland-specific field
BedTypes	Bed Type	BedType[]	Y	Refer to BedType Node

### BedType

Parameter	Comment	Type	Optional	Description
BedTypeId	Bed Type ID	String	Y	outside-china-mainland-specific field
BedTypeName	Bed Type Name	String	Y	outside-china-mainland-specific field
BedType	Bed Type	String	Y	Double bed, Single bed, Bunk bed, Round bed, Closet bed, Baby crib, Mother-child bed, Small bed, Capsule bed, Sofa bed, Water bed, Bunk bed, Folding bed, Spliced bed, Arranged by hotel, etc.
Count	Number of	Int	Y	outside-china-mainland-specific field

	Beds			
Size	Size of Bed	String	Y	outside-china-mainland-specific field

### PrepayResult

Parameter	Comment	Type	Optional	Description
CancelDescription	Cancellation Policy	String	N	
CancelType	Cancellation Type	Integer	N	1: Free cancellation; 2: Charged cancellation, 3: Limited-time cancellation, 4: Non-cancellation
LadderVouch	Use Ladder Guarantee Rule	Boolean	Y	
LadderParseList	Cancellation Policy Details	Ladder Parse[]	N	Refer to LadderParse Node
CancelTag	Cancellation Policy Tag	String	Y	For free cancellation and Non-cancellation it is null.

### LadderParse

Parameter	Comment	Type	Optional	Description
BeginTime	Start Time	Long	N	
EndTime	End Time	Long	N	
CutType	Deduction Type	Integer	N	0: No deduction; 1: Amount; 2: Percentage; 3: First night room fee;
CutValue	Deduction Value	Decimal	N	Original currency
Amount	Deduction	Decimal	N	For pay-at-hotel bookings outside mainland



	Value			China, the amount is in the original currency; for prepaid bookings, the amount is in RMB or the original currency paid by customers. For hotel-prepaid bookings, the amount is in the original currency.
ShortDesc	Short Description	String	Y	outside-china-mainland-specific field
AmountRmb	Deduction Value	Decimal	N	RMB
Exchange Rate	Exchange Rate	Decimal	Y	

### GuaranteeResult

Parameter	Comment	Type	Optional	Description
MoneyArrival Time	Guaranteed amount when check-in time is triggered	Double	N	(Deprecated) The currency type is the original currency of the RatePlan node's CurrencyCode.
ArrivalTime	Check-in time that requires guarantee	String	N	If the latest check-in time that the customer filled in is earlier than this, no need for guarantee money; otherwise, the guarantee money is required according to the MoneyArrivalTime.
RoomCount	Splitting point for room quantity guarantee	Integer	N	If the number of rooms that the customer books is less than this value, there is no need for a guarantee.
GuaranteeType	Guarantee Type	Integer	N	Binary representation: 1: Guaranteed at check-in time, 2: Guaranteed by the number of rooms, 3: Guaranteed upon reservation, 4: Non-guaranteed.
				0: Non-guaranteed; 2: Guaranteed at

				check-in time; 4: Guaranteed by the number of rooms; 8: Guaranteed upon reservation.
GuaranteeMoney	Amount that needs to be guaranteed under current conditions	Double	N	See Cancellation Policy Details for details.
NeedGuarantee	Whether guarantee is required under current conditions	Boolean	N	
CancelTime	Time when cancellation is available, in seconds	Long	N	(Deprecated) Cancellation is allowed before this time; after this time, cancellation is not allowed. If cancellation is not allowed, it is -28800. For free cancellation, it is Long.MAX_VALUE. Otherwise, it is the timestamp in Beijing time.
CancelDescription	Detailed description of cancellation policy	String	Y	
CancelTag	Cancellation policy tag	String	Y	For free cancellation and Non-cancellation it is null.
CancelType	Cancellation type	Integer	N	1. Free cancellation, 2. Charged cancellation, 3. Can be cancelled, 4. Non-cancellation.
LadderParseList	Cancellation Policy Details	LadderParse[]	N	Refer to LadderParse

## Meals

Parameter	Comment	Type	Option	Description
-----------	---------	------	--------	-------------

<b>r</b>			<b>al</b>	
hasMealTable	Whether meal table exists	Boolean	N	If it's true, then the "dayMealTable" field can be used to view the meal situation for each day.
mealCopyWriting	Meal copywriting description	String	N	Overall meal description.
dayMealTable	Daily meal table	List<DayMeal>	N	Contains multiple DayMeal nodes; refer to the DayMeal node.

For specific scene demos, see: [问答详情-艺龙开放平台](#)

## DayMeal

<b>Parameter</b>	<b>Comment</b>	<b>Type</b>	<b>Optional</b>	<b>Description</b>
date	Date of meal	String	N	In yyyy-MM-dd format, for example 2021-08-12.
useDynamicMeal	Whether to use dynamic meal	Boolean	N	If it's true, use the dynamicMealDesc field; if it's false, use the breakfastDesc, lunchDesc, and dinnerDesc fields.
dynamicMealDesc	Dynamic meal description	String	Y	For example: 3 meals (choose 2).
breakfastShare	Quantity of breakfasts	Int	N	For example: 0.
breakfastDesc	Breakfast description	String	Y	
lunchShare	Quantity of lunches	Int	N	For example: 1.
lunchDesc	Lunch description	String	Y	For example: 1 lunch.
dinnerShare	Quantity of	Int	N	For example: 2.

	dinners			
dinnerDesc	Dinner description	String	Y	For example: 2 dinners.
dayMealCopyWriting	Day meal description	String	Y	For example: 2 breakfasts/room.

#### AdditionalTax

Parameter	Comment	Type	Optional	Description
TotalAmountRmb	Total amount of additional tax and service fees	Decimal	Y	
AdditionalTaxItems	Additional tax and service fee details	AdditionalTaxItem[]	Y	Refer to the AdditionalTaxItem node.

#### AdditionalTaxItem

Parameter	Comment	Type	Optional	Description
Description	Description of additional tax and service fees	String	Y	
Amount	Amount of additional tax and service fees	Decimal	Y	

#### Request Example

```
https://api-test.elong.com/rest?timestamp=1489979202
&format=json&method=hotel.detail&signature=1b34811e21b8efe78738b3afd6ed68f4
&user={userid}&data={"Version":"1.28","Local":"zh_CN",
"Request":{"ArrivalDate":"2017-3-21","DepartureDate":"2017-3-22",
"HotelIds":"40101006","PaymentType":"All"}}
```

## Response Example

```
{
  "Code": "0",
  "Result": {
    "Count": 1,
    "Hotels": [
      {
        "HotelId": "40101006",
        "LowRate": 1.5,
        "CurrencyCode": "RMB",
        "Distance": 0,
        "BookingRules": [
          {
            "BookingRuleId": 94112,
            "TypeCode": "PerRoomPerName",
            "DateType": "BookDay",
            "StartDate": "2014-02-13T00:00:00 08:00",
            "EndDate": "2064-02-13T00:00:00 08:00",
            "StartHour": "00:00:00",
            "EndHour": "23:59:00",
            "Description": "The hotel requires the name of at least one guest per room"
          }
        ],
        "GuaranteeRules": [
          {
            "GuranteeRuleId": 18915459,
            "DateType": "CheckInDay",
            "StartDate": "2017-02-10T00:00:00 08:00",
            "EndDate": "2018-02-10T00:00:00 08:00",
            "WeekSet": "1,2,3,4,5,6,7,",
            "IsTimeGuarantee": false,
            "StartTime": "18:00",
            "EndTime": "06:00",
            "IsTomorrow": true,
            "IsAmountGuarantee": false,
            "Amount": 5,
            "GuaranteeType": "FirstNightCost",
            "ChangeRule": "NoChange",
            "Day": "2017-03-10T00:00:00 08:00",
            "Time": "18:00",
            "Hour": 6,
            "Description": "Guarantee condition: A credit card guarantee is required for stays from 17.02.10 to 18.02.10. Reservation changes and cancellations are not allowed after booking. Failure to check-in will result in a penalty equal to the cost of the first night's stay."
          }
        ]
      }
    ]
  }
}
```

## Notes

- When InvoiceModel field is Elong, it does not necessarily mean that the invoice is issued by Elong. Only prepaid products are likely to be Elong, and if the integrator does not want to issue invoices on their own website, they can contact business support to enable the "invoice agency service". Then it is Elong who issues invoices. If the agency service is not enabled, the integrator needs to issue invoices on their own.
- When requesting multiple hotel IDs, only up to two products are returned for each hotel.
- Regarding price rounding, some products may have decimal prices. If the distributor does not wish to display decimals on their website, they can round up or round down when displaying the prices. However, the actual price needs to be displayed to the customer on the order page.
- Try to control the amount of requested data, such as avoiding requesting static information (such as hotel descriptions, room type introductions, pictures, etc.). Static information can be obtained through static information files.
- For the Gift node under real-time search mode, StartDate, EndDate, DateType, and WeekSet do not need to be checked.
- Usage instructions for GuaranteeRule node:

When displaying, only need to show the description field and no other processing is required. When filling in an order, determine whether to submit payment information based on the following conditions:

When calling the hotel.list and hotel.detail search interfaces, if a guarantee rule appears, it may require a guarantee (but there may be no guarantee according to the conditions selected by the customer); if there is no guarantee rule, there is no need for a guarantee.

Guarantee rule filtering order: first check IsAmountGuarantee and IsTimeGuarantee fields, and then decide the final judgment field based on the results. Detailed judgment of IsAmountGuarantee and IsTimeGuarantee fields is as follows:

IsAmountGuarantee	IsTimeGuarantee	Description
FALSE	FALSE	Unconditionally guaranteed order, which must be guaranteed, (within the date range). No other conditions need to be checked.
TRUE	FALSE	Room quantity guarantee, check Amount
FALSE	TRUE	Check StartTime and EndTime for arrival time guarantee
TRUE	TRUE	Room quantity guarantee or arrival time guarantee. Check Amount, StartTime, and EndTime. If one condition is met,

		guarantee is required.
--	--	------------------------

- Usage instructions for GiftPackages node:

Take GiftPackage.PkgProducname as the gift package title in the room product and take PkgType field as the type (e.g., 0, displayed as a gift) to be displayed before the gift package title.

On the gift package details page, display the specific information of each category of X products (XProduct) separately according to the category (TypeName):

Take XProductName+Qunatity for each X product in the category to concatenate the X product title of each category, such as "X product A 1 per day + X product B 1 per day"; X product type (TypeName) can be displayed before the X product title. Under the subtitle of each X product, display its specific content, such as "Reservation rules: AppointPolicy Reservation time: ReceptionTimes Applicable number of people: Capacity Reservation phone: BookingPhone". If these fields are all empty, the X product does not need to be displayed.

After displaying all X products under a category, the special instructions of the gift package (GiftPackage.RuleDescriptionAdditional) can be displayed. Take the imgUrl field from the GiftPackage.Pictures to display images. Display the images in the order of Picture.ImgIndex.

### Common error codes

Error Code	Explanation	Solution
H000005	Check-in date is empty	This may be due to an incorrect date format. Supported date time formats: "yyyy-MM-dd", "yyyy-MM-dd HH:mm:ss"
H000006	Check-out date is empty	This may be due to an incorrect date format. Supported date time formats: "yyyy-MM-dd", "yyyy-MM-dd HH:mm:ss"
H002004	No permission to search prepaid products	Insufficient permissions. Contact business support to resolve.
H004001	No permission to use prepaid products	Insufficient permissions. Contact business support to resolve.
H100999	Search	This may be caused by underlying issues. Retry 1-2 times. Do not retry



	exception	indefinitely. It may also be due to too many hotel IDs being submitted. Try to keep it to less than 3.
--	-----------	--

## Data Availability validation

### Method Name

hotel.data.validate

### Description

It is recommended to call this method before submitting an order. If the returned Code is 0 and ResultCode is OK, it indicates that the order can be submitted normally.

### Request Parameters

Parameter	Comment	Type	Optional	Description
ArrivalDate	Check-in Date	Date	N	Use the format: yyyy-MM-dd. For example: 2022-12-09.
DepartureDate	Check-out Date	Date	N	Use the format: yyyy-MM-dd. For example: 2022-12-09.
EarliestArrivalTime	Earliest Check-in Time	DateTime	N	Please refer to the instructions in hotel.order.create.
LatestArrivalTime	Latest Check-in Time	DateTime	N	
HourRoomStartTime	Hourly Room Check-in Start Time	DateTime	Y	When the product being tested is an hourly room, this field needs to be input, and the format should be yyyy-MM-dd HH:mm:ss, which should conform to the start and end time of the hourly room.
HourRoomEndTime	Hourly Room	DateTime	Y	

	Check-out End Time			
HotelId	Hotel ID	String(8)	N	
RoomId	Display Room Type ID	String(10)	Y	Allowed to be empty. When passed in, the binding relationship of the room type ID will be checked.
RoomTypeID	Sales Room Type ID	String(10)	N	
RatePlanId	Product ID	Int	N	
TotalPrice	Total Price	Decimal	N	Currency type is the original currency.
NumberOfRooms	Number of Rooms	Int	N	The number of rooms the guest wants to book.
LittleMajiaId	Little Majia ID	String	Y	Obtained from the hotel.detail interface for promotion. When calling promotional products, this field needs to be passed through.
GoodsUniqId	Goods Unique ID	String	Y	Obtained from the hotel.detail interface for promotion. When calling promotional products, this field needs to be passed through.
ChildAges	Child Ages	Int[]	Y	outside-china-mainland-specific field.
NumberOfAdults	Number of Adults	Int	N	outside-china-mainland-specific field.

HotelCode	Hotel Code	String	N	outside-china-mainland-specific field.
SupplierId	Supplier ID	String	N	outside-china-mainland-specific field.
SubSupplierId	Secondary Supplier ID	String	N	outside-china-mainland-specific field.
ShopperProductId	Shopper Product ID	String	N	outside-china-mainland-specific field.
CurrencyCode	Currency	Enum	N	outside-china-mainland-specific field.

## Response

### root

Parameter	Comment	Type	Optional	Description
ResultCode	Verification Result	Enum	N	OK: Normal and Can be Booked Product: Invalid Product or Room Closed Inventory: Not Enough Rooms Rate: Price Mismatch
ErrorMessage	Specific Result Information	String	Y	Added in V1.02
GuaranteeRate	Guarantee Amount	Decimal	Y	Only for Guaranteed Orders

Currency Code	Guarantee Amount Currency Type	Enum	Y	Refer to Currency
CancelTime	Latest Cancellation Time	Date Time	Y	Cancellation Time for Guaranteed Order, if the returned time is earlier than the current time, it means this order cannot be changed or cancelled
FreeCancelTime	Free Cancellation Time	Date Time	Y	
PenaltyAmount	Penalty Amount	Decimal	Y	Added in V1.33
interValidateInfo	International Verification Details	Element	N	Refer to interValidateInfo node
ratePlanInfo	Policy List Information	Element	Y	Refer to RatePlanInfo node
orderHotel	Hotel Information	Element	Y	Refer to orderHotel node

### OrderHotel

Parameter	Comment	Type	Optional	Description
-----------	---------	------	----------	-------------

HotelId	Physical Hotel ID	String	N	outside-china-mainland-specific Field
Name	Hotel Name	String	N	outside-china-mainland-specific Field
HotelEnglishName	Hotel English Name	String	Y	outside-china-mainland-specific Field
Address	Address	String	Y	outside-china-mainland-specific Field
AddressEn	English Address	String	Y	outside-china-mainland-specific Field
Phone	Telephone	String	Y	outside-china-mainland-specific Field
CityName	City Name	String	N	outside-china-mainland-specific Field
HotelCountryName	Country Name	String	N	outside-china-mainland-specific Field
HotelCountryId	Country ID	String	N	outside-china-mainland-specific Field
HotelLatitude	Latitude	String	Y	outside-china-mainland-specific Field
HotelLongitude	Longitude	String	Y	outside-china-mainland-specific Field
CityId	City ID	String	N	outside-china-mainland-specific Field
Star	Star Rating	Int	Y	outside-china-mainland-specific Field

#### RatePlanInfo

Parameter	Comment	Type	Optional	Description
ConfirmType	Confirmation type	Int	N	Confirmation type, 0 for delayed confirmation and 1 for immediate confirmation. outside-china-mainland-specific field.
CancelName	Cancellation name	String	Y	Cancellation name: limit cancellation, non-cancellation, anytime cancellation. outside-china-mainland-specific field.
CancelDescription	Cancellation description	String	Y	outside-china-mainland-specific field.

RateNightlyRateList	Nightly rate	RoomRateNightlyRate[]	Y	Refer to the RoomRateNightlyRate node.
CancelPolicyList	Cancellation policy	CancelPolicy[]	Y	Refer to the CancelPolicy node.
OccupancyPerRoom	Max occupancy	Int	Y	outside-china-mainland-specific field.
AdultPerRoom	Number of adults	Int	Y	outside-china-mainland-specific field.
ChildPerRoom	Number of children	Int	Y	outside-china-mainland-specific field.
RoomChildAge	Children age	Int	Y	outside-china-mainland-specific field.
RoomDescription	Room description	String	Y	outside-china-mainland-specific field.
CheckInInstructions	Check-in instructions	String	Y	outside-china-mainland-specific field.
SmokingPreferences	Smoking preference	String	Y	outside-china-mainland-specific field.
RestInventoryCount	Available rooms	String	Y	outside-china-mainland-specific field.
ExtraPersonFee	Additional person fee	Decimal	Y	outside-china-mainland-specific field.
ExtraPersonFeeRMB	Additional person fee (RMB)	Decimal	Y	outside-china-mainland-specific field.
InterBedGroups	Bed types	InterBedGroup[]	Y	Refer to the InterBedGroup node.

AdditionalTax	Additional tax and service fee	AdditionalTax	Y	outside-china-mainland-specific field.
---------------	--------------------------------	---------------	---	--

### CancelPolicy

Parameter	Comment	Type	Optional	Description
Penalty	Penalty	Decimal	N	outside-china-mainland-specific field.
PenaltyRMB	Penalty (RMB)	Decimal	N	outside-china-mainland-specific field.
DateFrom	Cancellation start time	Date	N	outside-china-mainland-specific field.
DateTo	Cancellation end time	Date	N	outside-china-mainland-specific field.

### InterBedGroup

Parameter	Comment	Type	Optional	Description
BedGroupID	Bed type info ID	String	Y	outside-china-mainland-specific field.
BedGroupDesc	Bed type info description	String	Y	outside-china-mainland-specific field.
BedTypes	Bed types collection	BedType[]	Y	Refer to the BedType node.

### BedType

Parameter	Comment	Type	Optional	Description
BedTypeID	Bed type ID	String	Y	outside-china-mainland-specific field.
BedTypeName	Bed type name	String	Y	outside-china-mainland-specific field.
BedType	Bed type	String	Y	outside-china-mainland-specific field.
Count	Bed count	Int	Y	outside-china-mainland-specific field.
Size	Bed size	String	Y	outside-china-mainland-specific field.

## Request Example

```
https://api-test.elong.com/rest?timestamp=1488771221&format=json
&method=hotel.data.validate&signature=c098d1ef0902b7af1aef07674ac496d4
&user={userid}&data={"Version":"1.28","Local":"zh_CN","Request":
{"ArrivalDate":"2017-3-7","DepartureDate":"2017-3-8",
"EarliestArrivalTime":"2017-3-7 14:00:00","LatestArrivalTime":"2017-3-7 17:00:00",
"HotelId":"40101006","RoomTypeID":"1131","RatePlanId":"16774","TotalPrice":"200.0",
"NumberOfRooms":"1"}}
```

## Response Example

```
{
  "Code":"0",
  "Result":{
    "ResultCode": "OK",
    "GuaranteeRate": "200.00",
    "CurrencyCode": "RMB",
    "CancelTime": "2017-03-16 14:00:00"
  }
  "Guid":"196d84d9-19b1-4aa2-8891-1c699e806a3c"
}
```

## Note

If the error prompt returned is "Data verification interface, if it returns 'Failed to obtain product information. The hotel, room type, and RatePlan may be invalid or not associated, or there may be no corresponding inventory or room rate'", please refer to the validity check of the reference object.

## Common error codes

Error Code	Explanation	Solution
H001083	Failed to obtain product information, which may be due to invalid or unassociated hotel, room type, and RatePlan, or no	Check whether the HotelId, RoomTypeId, and RatePlanId are correctly matched (do not use HotelCode for HotelId and RoomId for RoomTypeId). If they are correct, the issue may be caused by outdated data, resulting in no inventory, full occupancy, no price, or failure to meet the reservation rules. This issue cannot be completely eliminated, but offline data mode can reduce the frequency of occurrence by updating data in a timely manner. For more details, please refer to the FAQ: <a href="#">问答详情-艺龙开放平台</a>



	corresponding inventory or room rate.	
--	---------------------------------------	--

## Order Creation

### Method Name

hotel.order.create

### Description

This API submits an order based on hotel product information obtained from the search interface or data interface and user-entered information after these parameters have been verified. The response indicates whether the order is successful. To prevent malicious order submissions, do not book more than seven rooms (less than eight) in one booking, and the guest's check-in and check-out dates should not exceed 30 days. If booking more rooms or extending the stay beyond 30 days, ask guests to book by phone instead. There are restrictions on submitting orders concurrently with the same AffiliateConfirmationId (which is the order number maintained by the third-party platform) or orders from the same customer. A timeout setting of 30 seconds is recommended, and retries can be attempted after 45 seconds if the order fails.

The API must be accessed via HTTPS.

### Payment Type

There are two payment methods: pay at hotel and prepaid.

Pay at hotel: this method includes guaranteed and non-guaranteed bookings.

- Guaranteed bookings include full payment guarantee and first-night guarantee, both of which consider cancellation situations. However, guests still need to pay for the room, and the guarantee fee will be refunded after check in.
- Prepaid bookings require full payment and also consider cancellation situations. Payment services need to be called for both payment guarantees and full prepayments.

We provides a corporate guarantee service, through which no credit card information of the customer needs to be submitted to elong during booking. Please contact sales to activate this feature.

For more detailed usage instructions, please refer to: [问答详情-艺龙开放平台](#)

During the credit card payment process that requires SMS verification code, the limit for sending SMS verification codes is 90 seconds per attempt. The SMS verification code can be resent through the hotel.order.pay API.

Refunds for credit card payments: after checkout, it may take 3-15 working days for the deposit to be refunded, depending on the refund processing time for each bank.

It is recommended that cooperation partners provide reminders about credit card payment on their

websites to avoid unnecessary complaints.

## Error Handling

When a clear response is received, refer to the error code to determine whether to retry (the processing method for common error codes is provided on this page below);

In case of unknown exceptions that cannot be handled normally (such as timeout, network exception, or return of abnormal characters), retry to ensure that each request has a clear and normal response;

Do not modify the AffiliateConfirmationId when retrying to avoid duplicate submissions;

You can also check whether an order has been created through hotel.order.detail using AffiliateConfirmationId to handle subsequent issues;

If an order submitted through the API does not receive a response but can be found in hotel.order.list, the order has been successfully created.

New orders can also be detected through the hotel.incr.order interface, and orders can be associated using AffiliateConfirmationId.

If network or system exceptions occur and retry or other compensation measures fail, manual customer service must confirm the actual status of the order to avoid losses due to different statuses between parties.

## Duplicate Orders

If a customer has already booked the hotel through another channel, the agent's order submission will fail. Determination criteria: check-in date + the same contact phone number (blank if there is no phone number) + guest name (after removing illegal characters such as spaces, if multiple guests, only one needs to match completely). Please note that this duplicate order judgment is based on whether there are valid orders meeting the conditions and cannot be used as the key judgment criterion for duplicate orders. For strict judgment, the sales end should ensure that only one order is generated and the order number remains the same for AffiliateConfirmationId.

## Request Parameters

root

Parameter	Comment	Type	Optional	Description
-----------	---------	------	----------	-------------

AffiliateConfirmationId	Affiliate Confirmation ID	String(30)	N	Partner order confirmation number. This value is different for each order, and the same value must be used for multiple requests of the same order. If this value is the same, even if all the information such as HotelId, guest information, and contact person are different for the subsequent requests, the previous order number will be returned instead of creating a new order. The interval between multiple requests needs to be more than 45 seconds.
HotelId	Hotel Code	String(8)	N	
RoomId	Displayed Room Type Code	String(8)	Y	Optional. When entered, it verifies the room type binding relationship.

RoomTypeId	Sales Room Type Code	String(8)	N	Update V1.10 Note the difference between RoomId and RoomTypeId. If it is real-time search mode, correspond to RatePlan.RoomTypeId in hotel.list, hotel.detail interface
RatePlanId	Product code	Int	N	
ArrivalDate	Check-in date	Date	N	If checking in at midnight, the check-in date is the day before, using the yyyy-MM-dd format, for example: 2022-12-09

Departure Date	Check-out date	Date	N	Using the yyyy-MM-dd format, for example: 2022-12-09
HourRoom StartTime	Start Time of Hourly Room	DateTime	Y	<a href="#">问答详情-艺龙开放平台</a>
HourRoom EndTime	End Time of Hourly Room	DateTime	Y	

CustomerType	Guest Type	Enum	Y	<p>Deprecated, no longer verified  All=Unified price;  Chinese=Domestic price, guests need to be reminded to "bring their mainland identity card to check in";  OtherForeign=Foreign price, guests need to be reminded to "bring their passport to check in";  HongKong=Hong Kong, Macao and Taiwan guest price, guests need to be reminded to "bring their Hong Kong, Macao or Taiwan identity card to check in";  ChinaGuest=Domestic guest price, guests need to be reminded to "bring their Chinese identity card or passport to check in";  It needs to be consistent with this attribute in the corresponding RatePlan (refer to hotel.list#RatePlan, hotel.detail#RatePlan, hotel.data.rp#RatePlan)</p>
PaymentType	Payment Type	Enum	N	SelfPay-Front desk payment, Prepay-Prepayment

NumberOfRooms	Number of Rooms	Int	N	How many rooms there are, the number of nodes corresponding to the OrderRoom array, the number of rooms per order should not exceed 7 (less than 8)
NumberOfCustomers	Number of Guests	Int	N	The number of guests needs to be greater than or equal to the number of rooms
EarliestArrivalTime	Earliest Check-in Time	DateTime	N	<p>1. Both are required fields. Users can choose two time points or ask customers to only select the latest check-in time, and the system calculates the earliest check-in time according to the following rules.&lt;br&gt;2. Earliest check-in time range: check-in date 7:00 (recommended 14:00, because the general hotel reception start time is 14:00)-23:59; latest check-in time range: 7:00-23:59 on the check-in date and 1:00-6:00 the next day; both must be whole hours, half hours, or 23:59.&lt;br&gt;3. The earliest check-in time must be later than the current time, and the latest check-in time must be later than the earliest check-in time, generally 3 hours apart.&lt;br&gt;4. If the customer books early in the morning and checks in early in the morning, such as 2:00-3:00, the user can set the latest check-in time to be the next day before 6:00.</p>

LatestArrivalTime	Latest arrival time	DateTime	N	
CurrencyCode	Currency type	Enum	N	Please keep consistent with where the price is obtained. Refer to Currency.
TotalPrice	Total price	Decimal	N	Original currency price. RatePlan's TotalRate * number of rooms, For distributors who have opened settlement prices, the settlement price should be passed here.
CustomerIPAddress	Customer visit IP	String	N	IP format such as 211.151.230.212. Please provide the customer's real IP address, which will help to better control malicious orders.
IsGuaranteedOrCharged	Whether guaranteed or paid	Boolean	Y	This attribute can only be used by partners who have opened company guarantee business. It can be set to true after your company confirms that the customer's payment has been successfully deducted; otherwise, it should be set to false.
ConfirmationType	Confirmation type	Enum	N	NotAllowedConfirm - Do not send a confirmation message. The partner will check the order status and contact the customer independently. The confirmation message template can refer to the eLong confirmation message template example. SMS_cn - ELong sends a confirmation message to the customer. When the order confirmation fails, ELong will take the initiative to contact the customer. NoNeed - ELong sends a confirmation message to the customer. When the order confirmation fails, ELong will not take the initiative to contact the customer. Note: Except for NotAllowedConfirm, ELong will send a confirmation message for all other options. If an email is entered when placing an order, an email will be sent as well.
NoteToHotel	Note to hotel	String	Y	The note from the customer to the hotel. Try not to fill in to avoid affecting the confirmation speed and reducing complaints. If you have to fill it out, try to standardize the requirements to facilitate communication and processing. Special note: Currently, eLong does not support this field, so even if it is passed, it will be ignored.
NoteToElong	Note to eLong	String	Y	
IsNeedInvoice	Whether need an invoice	Boolean	Y	The invoice for pay-at-hotel reservations is issued by the hotel; there are two ways to issue invoices for pre-paid reservations: issued by the recipient or issued by the hotel. ELong can provide agency



				services for recipient-issued invoices, please contact business to open relevant permissions.
OrderRooms	Order room information	OrderRoom[ N ]	N	The number of nodes in this node should be the same as NumberOfRooms. Refer to OrderRoom node.
Invoice	Invoice information	Invoice	Y	Fill in when IsNeedInvoice is true. Will be delivered by ordinary express delivery. Refer to Invoice node.
Contact	Contact person information	Contact	N	Refer to Contact node.
CreditCard	Credit card information	CreditCard	Y	Credit card information should be provided for guarantee and pre-paid orders. If IsCreateOrderOnly or IsGuaranteeOrCharged is true, credit card information cannot be passed. Refer to CreditCard node.
DoveCorpCard	Third-party payment information	DoveCorpCard	Y	Third-party payment information should be provided for guarantee and pre-paid orders. If IsCreateOrderOnly is true or IsGuaranteeOrCharged is false, third-party payment information cannot be passed. Refer to DoveCorpCard node.
ExtendInfo	Extended fields	ExtendInfo	Y	Refer to ExtendInfo node.
IsCreateOrderOnly	Only create an order	Boolean	Y	A version number greater than v1.20 is required. For detailed payment logic, please refer to here. true - Indicates that this request only creates an order without providing payment information. After the order is successfully created, the requester will then provide payment information through hotel.order.pay. false - The order information and payment are submitted together.
CustomerPrice	Final price sold to customer	Decimal	Y	The actual selling price should be passed for hotel invoice products or limited-price products distributed by the distributor.
OrderValidation	Order data validation	Object	Y	This logic is not currently supported. It is recommended to pass this field as it reduces the number of complaints and validates breakfast, guarantee amount, and cancellation time. Refer to OrderValidation.
Coupon	Promotion information	Object	Y	Deprecated. This is only a reminder and generally not required. For front-end self-payment, it is cash back; for prepayment, it is a direct discount.

LittleMajiald	"Majia" ID	String	Y	Obtained from the hotel.detail interface for promotion. This field needs to be passed for promotion products. Required for new search mode or international hotel requests. Recommended that previously integrated distributors for search mode also pass this field. There is no 30-minute limit for domestic hotel "Majia" IDs.
GoodsUniqId	Unique identifier for product	String	Y	Obtained from the hotel.detail interface for promotion. This field needs to be passed for promotion products. Required for new search mode or international hotel requests. Recommended that previously integrated distributors for search mode also pass this field.
SpecificRemark	Special requirements	String	Y	outside-china-mainland-specific field.
ChildAges	Ages of children	Int[]	Y	outside-china-mainland-specific field.
NumberOfAdults	Number of adults	Int	N	outside-china-mainland-specific field.
HotelCode	Hotel code	String	N	outside-china-mainland-specific field.
SupplierId	Supplier ID	String	N	outside-china-mainland-specific field.
SubSupplierId	Secondary supplier ID	String	N	outside-china-mainland-specific field.
ShopperProductId	Shopper ID in product library	String	N	outside-china-mainland-specific field.
EncryptOption	User information encryption option	Int	Y	0: No encryption required, 1: Symmetric encryption. When passing 1, the following fields need to be encrypted: Customers node name field, Contact node name, mobile phone number, email address, Invoice node title, taxpayer identification number, tax registration bank, registration bank account number, registration address, registration phone number Recipient node: Province, City, District, Street, Name, Phone number, Email address. Encryption method is the same as credit card.

## Invoice

Parameter	Comment	Type	Optional	Description
-----------	---------	------	----------	-------------

InvoiceType	Invoice Type	Enum	N	Added in v1.31. Paper - paper invoice, Electronic - electronic invoice, SpecialPaper - special invoice.
TitleType	Title Type	Enum	N	Personally - personal, Enterprise - enterprise, Government - government administrative unit. Default is enterprise. For Personally, no need to fill in the Title (the title defaults to personal) and ITIN (Taxpayer Identification Number) field. For Enterprise, it is mandatory to fill in the Title and ITIN (Taxpayer Identification Number) fields. For Government, it is mandatory to fill in the Title field.
Title	Title	String(200)	N	-
ITIN	Taxpayer Identification Number/ Unified Social Credit Code	String(20)	N	Character length should be 15, 18, or 20 digits, and can be a combination of numbers and letters or just numbers.
ItemName	Item Name	String(100)	N	The item name for the invoice, such as hotel room fees or accommodation fees.
Amount	Amount	Decimal	N	Price in Chinese RMB.
Recipient	Recipient	Recipient	N	Refer to the Recipient node.
IsNeedRelationOrder	Whether to add invoice remarks	boolean	Y	true - add hotel reservation information (hotel name, check-in date, check-out date, number of rooms) in the invoice remarks section. false - do not add, default value.

TaxPayerNum	Taxpayer Identification Number	String	Y	Mandatory for special invoices.
TaxRegisterBank	Opening Bank	String	Y	Mandatory for special invoices.
RegisterBankNum	Bank Account Number	String	Y	Mandatory for special invoices.
RegisterAddress	Registered Address	String	Y	Mandatory for special invoices.
RegisterPhoneNum	Phone Number	String	Y	Mandatory for special invoices.

### Recipient

Parameter	Comment	Type	Optional	Description
Province	Province	String(20)	N	There is no standard definition in the interface. Please fill in according to the national postal code regulations. Not required for electronic invoices.
City	City	String(20)	N	-
District	District	String(20)	N	-
Street	Street	String(100)	N	-
PostalCode	Postal Code	String	Y	-
Name	Recipient	String(10)	N	-

Phone	Phone Number	String(20)	N	-
Email	Email	String(100)	Y	Required for electronic invoices.

### Contact 节点

Parameter	Comment	Type	Optional	Description
Name	Name	String(50)	N	Please do not enter names like "张三、李四、王五、test, or 测试" in the production environment, as there is a corresponding blacklist for these names in the system. Also, do not use titles such as Miss, Mr., or Ms.
Email	Email	String(50)	Y	If an email address is entered when placing an order, notification emails regarding successful bookings will be sent to the corresponding email.
Mobile	Mobile	String(20)	N	Prefix should be added for Hong Kong/Macau mobile phones, not required for mainland China mobile phones, and not supported in other regions.
Phone	Phone Number	String(20)	Y	-
Fax	Fax	String(20)	Y	-
Gender	Gender	Enum	N	Female - female, Male - male, Unknown - undisclosed
FirstName	First Name	String	N	outside-china-mainland-specific field.
LastName	Last	String	N	outside-china-mainland-specific field.

me	Name	g		
----	------	---	--	--

### CreditCard

Parameter	Comment	Type	Optional	Description
Number	Card Number	String (20)	N	<p>Card number. Note: the fields under CreditCard node are case-sensitive. 1. For guaranteed orders, all fields under Creditcard must have valid values. 2. The test environment can use card number 4336660000000000. 3. If it is an ID card number, please provide a valid ID card information. eLong system has corresponding verification for ID card number. 4. When VerifyCode (CVV) is needed, call the credit card validation interface to confirm whether the credit card needs to provide CVV first. If the card needs CVV and CVV is not provided, the order will be rejected. 5. Card number encryption method (mandatory): Encryption method: Use DES symmetric encryption algorithm (cbc mode, the key value and IV value are consistent). Encrypted content = current timestamp + "#" + credit card number. Encryption key: the last 8 digits of the account appkey. For example: CreditCardNO = des_encrypt(time(). '#4336660000000000', substr(appkey, -8)); Test encryption method</p> <p>Xcrypt::encrypt( '12345#6789012345', '12345678') == 8e519cf90bf4240f7f653af ff4f6d658f5e402a4ff2581a7</p> <p>Java version encryption algorithm refers to Java Credit Card Encryption. Note: Credit cards only support domestic UnionPay cards, subject to the returned value of the interface.</p>
CVV	CVV	String (3)	N	<p>CVV code. Needs to be encrypted. Encryption method is the same as card number. Note: In the new process of credit card payment, CVV is mandatory, and it is not necessary to determine whether CVV is required according to the IsNeedVerifyCode field</p>

				returned by the common.creditcard.validate method.
Expiration Year	Expiration Year	Int	N	Expiration year.
Expiration Month	Expiration Month	Int	N	Expiration month.
HolderName	Cardholder Name	String (20)	N	Cardholder name in Chinese characters without spaces. Needs to be encrypted. Encryption method is the same as card number.
IdType	ID Type	Enum	N	ID type. IdentityCard for ID card, Passport for Passport, Other for others. Note: The current interface only supports ID cards, and bank cards that require ID cards to be opened must be consistent.
IdNo	ID Card Number	String (20)	N	ID card number. Needs to be encrypted. Encryption method is the same as card number.
Mobile	Mobile Phone Number	String (20)	Y	Mobile phone number. Needs to be encrypted. Encryption method is the same as card number. This field is mandatory for the new process of credit card payment and needs to be the same as the mobile phone number bound to the credit card. Otherwise, the order payment will fail.

### DoveCorpCard

Parameter	Comment	Type	Optional	Description
Number	Card Number	String (20)	N	Note: the fields under DoveCorpCard node are case-sensitive. Encryption method (mandatory): Use DES symmetric encryption algorithm (cbc mode, the key value and IV value are consistent). Encrypted content = current timestamp + "#" + credit card number. Encryption key: the

				last 8 digits of the account appkey. For example: DoveCorpCardNO= des_encrypt(time(). '#4336660000000000', substr(appkey,-8)); Test encryption method Xcrypt::encrypt( '12345#6789012345', '12345678') == 8e519cf90bf4240f7f653af ff4f6d658f5e402a4ff2581a7 Java version encryption algorithm refers to Java Credit Card Encryption.
ExpirationDate	Expiration Date	String (4)	N	Format MMY.

### ExtendInfo

Parameter	Comment	Type	Optional	Description
String1	Extension Field 1	String(100)	Y	Can store some information for partners themselves (Api will not change the information here), which is conducive to channel analysis after obtaining orders.
String2	Extension Field 2	String(100)	Y	
String3	Extension Field 3	String(100)	Y	
Int1	Extension Field 4	Int	Y	
Int2	Extension Field 5	Int	Y	
Int3	Extension Field 6	Int	Y	

### OrderRoom

Parameter	Comment	Type	Optional	Description
Customers	Check-in Person	Customer[]	N	Each room supports multiple check-in person information. This field is an array. Note: When converting to XML, please pay attention to



	Information			customizing a node. Please refer to the Customer node.
--	-------------	--	--	--

**Customer**

Parameter	Comment	Type	Optional	Description
Name	Name	String(50)	N	Prohibited from using "Miss", "Mr.", "Ms.", celebrity names, obscene words, and Chinese names must not contain any characters other than Chinese characters. When guests enter their English or Pinyin names, clear prompts should be given. A red prompt text should be displayed below, similar to: "Use "/" to separate the English surname and name". And strong validation must be performed. If there is no slash, the order cannot be submitted.
Gender	Gender	Enum	N	Female for female, Male for male, Unknown for confidential.
Nationality	Nationality	String(10)	N	Some hotels require nationality to be provided in the BookingRule of the product; fill in specific nationalities, such as China, Japan, USA, etc.
IdCardNo	ID Card Number	String	Y	Need to determine the attributes of the Identification field in the product and pass the corresponding identity information according to the verification requirements; it can be encrypted, and the encryption method is the same as the ID card number field under the credit card node.
IdCardType	ID Card Type	Enum	Y	IdentityCard for ID card, Passport for Passport, HomeVisitingCertificate for home-visiting certificate, TaiwanCompatriotCertificate for Taiwan compatriot certificate, HongkongMacaoTaiwanResidencePermit for Hong Kong, Macao and Taiwan residents' residence permit.
FirstNa	First	String	Y	outside-china-mainland-specific field.

me	Name			
LastName	Last Name	String	Y	outside-china-mainland-specific field.

### OrderValidation

Parameter	Comment	Type	Optional	Description
Type	Verification type	String	N	Comma-separated numbers: 0: No verification, 1: Breakfast quantity verification, 2: Cancellation time verification, 3: Guarantee amount verification. If all verifications are required: Type=1,2,3
Guarantee Amount	Guarantee amount	Decimal	Y	Prepayment or guarantee amount.
CancelTime	Latest cancellation time	DateTime	Y	The latest cancellation time for guaranteed prepayment.
DateBreakFastList	Daily breakfast quantity list	DateBreakFastList[]	Y	refer to the DateBreakFast .

### DateBreakFast

Parameter	Comment	Type	Optional	Description
Date	Date	DateTime	N	
BreakFastCount	Number of breakfasts included	String	N	

## CouponInfo

Parameter	Comment	Type	Optional	Description
Amount	Total discount amount	Decimal	N	
NightlyCoupons	Daily promotion details	Nightly Coupon	Y	Please refer to the NightlyCoupon node.

## NightlyCoupon

Parameter	Comment	Type	Optional	Description
Date	Stay date	DateTime	N	
PromotionRoomNights	Promotion details per room night	PromotionRoomNight	N	Please refer to the PromotionRoomNight node.

## PromotionRoomNight

Parameter	Comment	Type	Optional	Description
Amount	Discount amount	Decimal	N	

## Response Result

### Root

Parameter	Comment	Type	Optional	Description
OrderId	Order number	Long	N	
CancelTime	Latest cancellation time	DateTime	N	If the date is 9999-12-30 23:00:00 and other conditions, it means that there is no limit on the cancellation time. Orders without a limit on the cancellation time.
GuaranteeAmount	Guarantee	Decimal	Y	If this order is a guaranteed order, the guarantee amount will be listed here. The currency is RMB (if

	amount			HKD was submitted when the order was placed, the corresponding RMB amount will also be calculated here).
CurrencyCode	Currency type	Enum	Y	
IsInstantConfirm	Whether it is instantly confirmed	Boolean	Y	Added in v1.19. By using this attribute, you do not need to request the hotel.order.instant interface anymore. Instant confirmation only indicates this inventory confirmation method. Whether it can be confirmed to the customer ultimately still depends on whether the order is a guaranteed order. Guaranteed orders need to be confirmed after the guarantee is successful, and prepayment orders also need to wait for the customer to pay before confirming. Note: Instant order confirmation does not mean that it will definitely be confirmed finally, and hotels may reject orders with very small probabilities. Therefore, please synchronize the order status in real-time. Once the order status changes to anything other than "confirmed", please notify the customer immediately.
PaymentDeadlineTime	Payment deadline	DateTime	Y	Added in v1.19. For guaranteed prepayment orders, if the credit card submitted fails to pay due to some reasons, the system can reserve a period of time for continued payment. If the payment is not successful at this time point, the system will automatically cancel the order. To continue the payment, please use the hotel.order.pay interface.
PaymentMessage	Payment error message	String(100)	Y	Added in v1.19.

## Request Example

```
https://api-
test.elong.com/rest?format=json&method=hotel.order.create&user={userid}&timestamp=1
488508207&signature=1b34c24f5c31381a67c666f4dc211077&data={"Local":"en_US","Req
uest":{"AffiliateConfirmationId":"131703030230110195","ArrivalDate":"2017-03-05
18:30:00","ConfirmationType":"NotAllowedConfirm","Contact":{"Mobile":"158*****7","Nam
e":"测试样例
"},"CreditCard":{"ExpirationMonth":10,"ExpirationYear":2016,"HolderName":"28e1e42de54
5f17f008cb83048970e94b2fc8721c33230ba5bc76be4d90ba121","IdNo":"28e1e42de545f1
7fb2483df69743b72bb23b61f9102df0191bb607a11f908a8c","IdType":"IdentityCard","Nu
mber":"28e1e42de545f17f491da318d9565d874c65e69a612f3fef7dba4b11c89801da","cVV
":"28e1e42de545f17fea797d0b4807ed06"},"CurrencyCode":"RMB","CustomerIPAddress":"1
92.168.1.1","CustomerType":"OtherForeign","DepartureDate":"2017-03-06
18:30:00","EarliestArrivalTime":"2017-03-05
17:00:00","HotelId":"40101022","IsGuaranteeOrCharged":false,"IsNeedInvoice":false,"Latest
ArrivalTime":"2017-03-05
19:00:00","NoteToElong":"","NumberOfCustomers":1,"NumberOfRooms":1,"OrderRooms":[{"
Customers":[{"Name":"测试入住
"}]}],"PaymentType":"SelfPay","RatePlanId":8703,"RoomTypeId":"1043","TotalPrice":350},"V
ersion":1.29}
```

## Response Example

```
{
  "Code": "0",
  "Result": {
    "OrderId": 12345678,
    "CancelTime": "9999-12-30 00:00:00",
    "IsInstantConfirm": false
  }
  "Guid": "196d84d9-19b1-4aa2-8891-1c699e806a3c"
}
```

## Notes

1. Use `common.creditcard.validate` to validate credit cards, check if they are usable and whether CVV2 is required (see link: CVV2). If CVV2 is not required, do not ask for it from the user.
2. After opening virtual card services, your company can settle accounts with customers by yourself. Our company will settle on a weekly or monthly basis. If needed, virtual card information can be submitted in

the order submission and payment interface, set IsGuaranteeOrCharged to true, and leave credit card information blank.

3. Submitted information cannot contain the following 9 special characters: '<', '>', '&', '"', "'", ';', '\\', ':', '='
4. If the product requires guarantee, then it is necessary to provide relevant information for the guarantee. If no guarantee is required, then do not provide any guarantee information. If the guarantee rules are met after checking, please place an order without providing any guarantee information and refund the fee to the user after the order is successfully placed. This issue is caused by the search interface being updated faster than the order interface, and this rule is no longer applicable but has not been obtained by the search interface.

### Common Error Codes

Error Code	Explanation	Solution
H000005	Check-in date cannot be empty	This may be caused by an error in the date format. Supported date and time formats are: "yyyy-MM-dd", "yyyy-MM-dd HH:mm:ss".
H000018	{0} contains illegal characters	The submitted information cannot contain any of the following 9 special characters: '<', '>', '&', '"', "'", ';', '\\', ':', '='.

H00 099 7	Unknown exception	Retry. If this issue persists, please contact technical support.
H00 101 3	Guaranteed or paid orders must be filled out	If your company has activated guarantee services, then IsGuaranteeOrCharged must be set to true for orders that require payment, and credit card information cannot be provided.

H00 103 7	Credit card expired or guaranteed or paid service has expired	There may be two possible reasons for this error. The first is that virtual card service is not activated, and therefore the credit card provided is invalid. In this case, ask the customer for a valid credit card. If virtual card service is activated, the virtual card may have expired. Contact your business representative to resolve this issue.
H00 103 9	Prepayment or compulsory guarantee orders must be set as guaranteed or paid	If your company has activated guarantee services, then IsGuaranteeOrCharged must be set to true for orders that require payment, and credit card information cannot be provided.



H00 104 0	No payment or guarantee privileges, cannot be set as guaranteed or paid	This means virtual card service is not activated. To activate it, you need to contact your business representative.
H00 104 1	If guaranteed or paid services are used, credit card information does not need to be provided	If your company has activated guarantee services, and the order requires payment, do not provide credit card information.

H00 115 2	For prepay or compulsory guarantee orders with virtual card services, no credit card or third-party payment information needs to be provided	If your company has activated guarantee services and has not activated third-party payment, and the order requires payment, do not provide credit card or third-party payment information.
H00 115 3	For prepay or compulsory guarantee orders with third-party payment services, no credit card information needs to be provided	If your company has activated third-party payment, and the order requires payment, do not provide credit card information.

<p>H00 115 4</p>	<p>For prepay or compulsory guarantee orders with third-party payment services, third-party payment information needs to be provided</p>	<p>If your company has activated third-party payment, and the order requires payment, provide third-party payment information.</p>
<p>H00 115 5</p>	<p>No payment or guarantee privileges, do not provide third-party payment information</p>	<p>If your company has not activated third-party payment, do not provide third-party payment information.</p>
<p>H00 115 6</p>	<p>It is impossible to confirm the type of payment privilege (virtual card or third-party payment)</p>	<p>Guarantee services and third-party payment services cannot be activated at the same time. Contact your business representative to resolve this issue.</p>

H00 104 3	Duplicate or too fast submission of orders	Do not submit orders concurrently. If an exception occurs, submit the order again after 45 seconds.
H00 104 5	Suspected duplicate order, no processing	Please refer to the instructions and precautions on this page for the conditions under which duplicate orders are detected.
H00 104 6	The system cannot accept your invoice request	Do not include the Invoice node. If needed, contact your business representative to resolve this issue.

H001083	Failed to obtain product information, possibly due to invalid or unassociated hotels, room types, or rate plans, or there may be no corresponding inventory or room rates	<a href="#">问答详情-艺龙开放平台</a>
H001085	The underlying order submission failed	Retry. If this issue persists, please contact technical personnel.
H001086	The last-room products should be sold at the appropriate time	Refer to the today's special field and its date in the hotel.data.rp interface.
H099999	Unknown error	Retry. If this issue persists, please contact technical personnel.
H100999	System exception	Retry. If this issue persists, please contact technical personnel.
H101093	The underlying order submission save exception	Retry. If this issue persists, please contact technical personnel.

# Order Cancellation

## Method Name

hotel.order.cancel

## Description

After a successful order submission, if the CancelTime property is returned in the result and the time is before the CancelTime, this API can be used to cancel the order. If it is a guaranteed prepayment order, please follow the cancellation terms of the guarantee prepayment rules.

There may be penalties for cancelling a successfully placed order. Use the request order details API to query penalty properties. If the order status has been cancelled for more than 48 hours, please contact Elong customer service to follow up on the cancellation results.

For new orders, full rooms, special full rooms, and pricing change statuses, the guarantee prepayment rules can be ignored and the cancellation can be performed directly. When it is a full room, special full room, or pricing change status, please use the cancel order API to cancel the order. For confirmed orders, it is necessary to determine whether it can be cancelled according to the guarantee prepayment rules. For immediately confirmed orders in the approved state, it is necessary to determine whether it can be cancelled according to the guarantee prepayment rules. Non-immediately confirmed orders can ignore the guarantee prepayment rules and cancel directly.

For more detailed instructions, please refer to the following link:

<http://open.elong.com/faq/detail?id=122&plt=2>

This API must be accessed using HTTPS.

[详情-艺龙开放平台](#)

## Request Parameters

### Root

Parameter	Comment	Type	Optional	Description
OrderId	Order Number	Long	N	
CancelCode	Cancellation Type	String(10)	N	Example: Not satisfied with hotel-related conditions, Flight delay, Price too high, customer not accepting, Booked through other channels, Change of itinerary, Hotel changed, Duplicate order, Other
Reason	Specific	String()	Y	

	Reason	50)		
PenaltyAmount	Cancellation Penalty	Decimal	Y	Added in version 1.32. 0, default value, no cancellation penalty check is performed, if it can be cancelled, the cancellation will proceed regardless of if there is a penalty or not, and the penalty calculated by Elong's interface will be used. -1, if there is a penalty for cancellation, the cancellation cannot proceed. If there is no penalty, the cancellation can proceed. Greater than 0, check the cancellation penalty. The cancellation will only proceed if it equals the penalty calculated by Elong's system. Otherwise, the cancellation will be rejected.

## Response

Parameter	Comment	Type	Optional	Description
Success	Cancellation Request Processing Result	Boolean	N	Note that there are three "s" in Success. A return value of true means that Elong has received the request. Whether a refund can be made needs to be checked in the refundDetail node of the order details.
Penalty Amount	Cancellation Penalty	Decimal	Y	Added in version 1.32. Cancellation penalty value

## Request Example

```
https://api-test.elong.com/rest?format=json&method=hotel.order.cancel
&user={userid}&timestamp=1488508207&signature=1b34c24f5c31381a67c666f4dc211077
&data={"Version":"1.28","Local":"zh_CN","Request":{"OrderId":"1234567","CancelCode":"行程变更"}}
```

## Response Example

```
{
  "Code": "0",
  "Result": {
    "Successs": true
  }
  "Guid": "196d84d9-19b1-4aa2-8891-1c699e806a3c"
}

{
  "Code": "H001094|取消订单失败:非常抱歉，您的订单酒店已确认入住，无法取消，如您
  仍需取消，请联系同程艺龙客服。",
  "Result": {
    "Successs": false
  },
  "Guid": "17787e35-8dd7-44e3-afc4-afee0a1475b5"
}

{
  "Code": "H001094|取消订单失败:非常抱歉，您的订单已超过最晚取消时间，不能操作取
  消。",
  "Result": {
    "Successs": false
  },
  "Guid": "f1589c5d-b9ef-439b-9043-1ee30f2cc44a"
}
```

## Notes

If it is a guaranteed or prepaid order, pay attention to the cancellation penalty. When refunding to the customer, you need to check the refundDetail node in the order details.

## Common Error Codes

Error Code	Explanation	Solution
H001094	Failed to cancel the order: {underlying error message}	Check if the order can be cancelled, and use hotel.order.detail to view its details.
H001053	The order number must be filled in.	The order number must be filled in.



H001054	Order ID error, order number does not exist.	Order ID error, the order number does not exist.
H001055	Order ID error! OrderFrom inconsistency.	Order ID error! Inconsistent OrderFrom.
H001056	The order is already in a cancelled state.	Check the order status, and use hotel.order.detail to view its details.
H001151	The order has been approved and is being confirmed. Cancellation is not allowed at this time.	Check the order status, and use hotel.order.detail to view its details.
H001139	The cancellation penalty is inconsistent.	The cancellation penalty of the interface is insufficient, should be {0}. The penalty value is inconsistent with the penalty value calculated by Elong.

## Order Detail

### Method Name

hotel.order.detail

### Description

Get the detailed information of a single order based on the order ID. The Elong order number or the distributor's own order number can be provided. Only orders within six months can be searched. This API is used to show the order status to the user.

### Request Parameters

Parameter	Comment	Type	Optional	Description
OrderId	Order ID	long	N	If OrderId is not 0, it is the primary key.
AffiliateConfirmationId	Affiliate order ID	String	Y	Search by AffiliateConfirmationId if OrderId=0.
Options	Other conditions	String	Y	Separated by commas for multiple options.1 return SpecialCancelApply

### Response

### Root

Parameter	Comment	Type	Optional	Description
OrderId	Order ID	Long	N	
HotelId	Hotel ID	String(8)	N	
HotelName	Hotel name	String(200)	Y	Added in version V1.03.
RoomId	Room type ID	String(8)	Y	Added in version v1.36.
RoomName	Room type name	String(50)	N	The room type name displayed to guests.
RoomTypepId	Sales room type ID	String(8)	N	
RoomTypepName	Sales room type name	String(50)	Y	Added in V1.03. This name is for reference only and should not be shown to guests.
RatePlanId	Product ID	Int	N	
RatePlanName	Product name	String(100)	Y	Added in version V1.05.
ArrivalDate	Check-in date	Date	N	
DepartureDate	Check-out date	Date	N	
Status	Order status	String(2)	N	A-Confirmed B-NO SHOW B1-Reserved but no record found B2-To be confirmed B3-Temporarily uncertain C-Checked out D-Deleted E-Canceled F-Checked in G-Price change H-Modification N-New O-Full room S-Special U-Special full room V-Approved Z-Deleted, change hotel. Please refer to the domestic hotel order process for the status flow.

ShowStatus	Displayed order status	Long	Y	Added in version V1.12. Please display this status to the guest. Detailed information under certain statuses will appear in NoteToGuest. 0 - Failed guarantee; 1 - Waiting for guarantee; 4 - Waiting for confirmation; 8 - Waiting for payment; 16 - Waiting for verification of check-in; 32 - Hotel rejected order; 64 - Not checked in; 128 - Checked out; 256 - Canceled; 512 - Confirmed; 1024 - Checked in; 2048 - Processing guarantee; 4096 - Processing payment; 8192 - Payment failed.
ConfirmPoint	Next confirmation feedback time point	DateTime	Y	Added in version V1.12. When ShowStatus=4 waiting for confirmation, the system will update the relevant content before this time point. If you feel that this time point is too long, you can call hotel.order.promote to urge confirmation.
CustomerType	Customer type	Enum	N	All = unified price; Chinese = Domestic price, need to remind customers to "bring a mainland ID card to check in"; OtherForeign = Foreign price, need to remind customers to "bring a foreign passport to check in"; HongKong = Hong Kong, Macau and Taiwan customer price, need to remind customers to "bring a Hong Kong, Macao and Taiwan ID card to check in"; ChinaGuest = Chinese guests, need to remind customers to "bring a Chinese ID card or passport to check in".
PaymentType	Payment type	Enum	N	SelfPay-Front-end payment; Prepay-Prepaid.
NumberOfRooms	Number of rooms	Int	N	
NumberOfCustomers	Number of customers	Int	N	
EarliestArrivalTime	Earliest arrival time	DateTime	N	
LatestArrivalTime	Latest arrival time	DateTime	N	
Currency	Currency	Enum	N	RMB, HKD, MOP, TWD, USD

Code	type			
TotalPrice	Total price	Decimal	N	See CurrencyCode field for currency type.
ElongCardNo	eLong membership card number	String(20)	Y	Added in version V1.01.
ConfirmationType	Confirmation type	Enum	N	NotAllowedConfirm - Not allowed to confirm (partners can check the order status by themselves and contact customers); SMS_cn - eLong sends text messages to customers when there is a problem with the order, NoNeed - eLong sends text messages to customers when there is a problem with the order; Except for NotAllowedConfirm, eLong will send an email to partners when there is a problem with the order
GiftPackages	Gift Packages	GiftPackage[]	Y	Refer to the GiftPackage node. See the Gift Package (GiftPackage Node) Instructions at the bottom of the document for usage instructions.
InvoiceMode	Invoice Issuance Mode for Prepaid Orders	Enum	Y	Added in version v1.11. Elong-issued invoices, Hotel-issued invoices. Front-pay products are all hotel-issued invoices, and this filtering is for prepaid products. If InvoiceMode is empty in the result, it means that no invoice is issued. It should be noted that Elong-issued invoices actually refer to the service of Elong providing invoice issuance. Please contact business if you need to activate it.
TotalPriceExchanged	Total Selling Price of the Order Converted to RMB	Decimal	Y	Added in version V1.28
TotalCostPriceExchanged	Total Cost Price of the Order Converted to RMB	Decimal	Y	Added in version V1.28
IsInstantConfirm	Whether it is Confirmed	Boolean	Y	Added in version V1.28

	d Immediately or Not			
AffiliateConfirmationId	Order Number of the Affiliate	String(50)	Y	Added in version V1.28
OrderHotel	Hotel Information Associated with the Order	OrderHotel	Y	Added in version V1.28, refer to the OrderHotel node.
RefundAmount	Offline Refund Amount for Prepaid Orders	Decimal	Y	<a href="#">问答详情-艺龙开放平台</a>
CustomerPrice	Final Price Sold to Customer	Decimal	Y	
payAmount	Actual Payment Amount	Decimal	Y	Newly added field. Non-guaranteed orders are not returned.
HourRoom	Whether it is an Hourly Room	Boolean	Y	Added in version v1.55. Returns true for hourly room products.
HourRoomStartTime	Start Time of Hourly Room Check-in	DateTime	Y	<a href="#">问答详情-艺龙开放平台</a>
HourRoomEndTime	End Time of Hourly			

me	Room Check-in			
Meals	Meal Information	DayMeal[]	N	Refer to the DayMeal node.
SpecialCancellationApply	Special Cancellation Request	Boolean	N	<a href="#">问答详情-艺龙开放平台</a>
Breakfast	Breakfast	String	Y	outside-china-mainland-specific field.
BasePrepaymentRule	Basic Prepayment Rules	Element	Y	
SupplierId	Supplier ID	String	Y	outside-china-mainland-specific field.
SubSupplierId	Secondary Supplier ID	String	Y	outside-china-mainland-specific field.
SpecificRemark	Special Requirements	String	Y	outside-china-mainland-specific field.
TaxAndService	Tax and Service Fees in Original Currency	Decimal	Y	outside-china-mainland-specific field.
TaxAndServiceRMB	Tax and Service Fees in Chinese Yuan	Decimal	Y	outside-china-mainland-specific field.
ExtraPersonFeeRMB	Additional People's Expenses (Additional	Decimal	Y	outside-china-mainland-specific field.

	I Charges in RMB)			
CheckIn Instructions	Check-In Instructions	String	Y	outside-china-mainland-specific field.
BedDesc ription	Bed Type Description	String	Y	outside-china-mainland-specific field.
BoardInf o	Dining information	Element	Y	Refer to the BoardInfo node, outside-china-mainland-specific field
Occupan cyPerRo om	Maximum number of adults per room	Int	Y	outside-china-mainland-specific field
Children Occupan cyPerRo om	Maximum number of children per room	Int	Y	outside-china-mainland-specific field
Number OfAdults	Number of adults	Int	Y	outside-china-mainland-specific field
ChildAge s	Age of children	Int[]	Y	outside-china-mainland-specific field
IsCancel BeforeC onfirmati on	Whether the reservatio n has been cancelled before confirmati on	Boolea n	Y	outside-china-mainland-specific field
InternetT ype	Type of internet	String	Y	outside-china-mainland-specific field

	access			
Internet Desc	Description of internet access	String	Y	outside-china-mainland-specific field
BedTypeID	Bed type ID	String	Y	outside-china-mainland-specific field
Internet	Internet access	String	Y	outside-china-mainland-specific field
AdditionalTax	Additional taxes and service fees	AdditionalTax	Y	Refer to the AdditionalTax node, outside-china-mainland-specific field

### GuaranteeRule

Parameter	Comment	Type	Optional	Description
GuaranteeRuleID	Guarantee rule ID	Int	N	
Description	Description	String(255)	N	If there is a guarantee rule, display this field to the user.
DateType	Date type	Enum	N	BookDay-booking date, CheckInDay-check-in date, StayDay-stay date
StartDate	Start date	Date	Y	
EndDate	End date	Date	Y	
WeekSet	Days of the week that are valid	String(20)	Y	



IsTimeGuarantee	Whether time guarantee is needed	Boolean	N	False: do not check arrival time, True: need to check arrival time
StartTime	Start time of the guarantee	Time	Y	Used for checking when IsTimeGuarantee == true
EndTime	End time of the guarantee	Time	Y	[Supplement] When EndTime is less than StartTime, it defaults to require guarantee from StartTime to 6am on the following day.
IsTomorrow	Whether the end time of the guarantee is the next day	Boolean	Y	false for the same day, true for the next day
IsAmountGuarantee	Whether quantity guarantee is needed	Boolean	N	False: do not check room quantity conditions, True: check room quantity conditions; If both IsTimeGuarantee and IsAmountGuarantee are false, then the guarantee is mandatory
Amount	The number of rooms to be guaranteed, reservation of how many	Int	Y	Used for checking when IsAmountGuarantee == true

	rooms or more requires a guarantee			
GuaranteeType	Guarantee type	String	Y	FirstNightCost-guarantee the cost of the first night, FullNightCost-guarantee the full cost
ChangeRule	Cancellation and change rule of guarantee rule	Enum	Y	Guarantee rule cancellation change rule: NoChange - does not allow changes or cancellations, NeedSomeDay - allows changes/cancellations with notice by XX days/YY hours before, NeedCheckinTime - allows changes/cancellations with notice before a certain number of hours before the earliest check-in time, NeedCheckin24hour - allows changes/cancellations with notice a certain number of hours before 24:00 on the check-in date.
Day	Date parameter	Date	Y	When ChangeRule=NeedSomeDay, it corresponds to "allows changes/cancellations with notice by XX days/YY hours before" in rule2 description
Time	Time parameter	Time	Y	
Hour	Hour parameter	Int	Y	When ChangeRule=NeedCheckinTime, it corresponds to the number of hours before the earliest check-in time in the rule3 description. When ChangeRule=NeedCheckin24hour, it corresponds to the number of hours before 24:00 on the check-in date in the rule4 description.

Parameter	Comment	Type	Optional	Description
PrepayRuleId	Rule ID	Int	N	
Description	Description	String(255)	N	
DateType	Date type	Enum	N	BookDay-booking date, CheckInDay-check-in date, StayDay-stay date
StartDate	Start date	Date	Y	
EndDate	End date	Date	Y	
WeekSet	Days of the week that are valid	String(20)	Y	
ChangeRule	Cancellation and change rule of prepayment policy	Enum	N	PrepayNoChange - does not allow changes or cancellations; PrepayNeedSomeDay - whether free changes/cancellations are possible before the appointed date by Hour hours on the day of check-in (generally no penalty is charged), a penalty applies between Hour and Hour2, and changes/cancellations are not allowed after Hour2; PrepayNeedOneTime - allows free changes/cancellations before a specific date and time (DateNum + Time)
Hour	Number of hours for the first stage	Int	Y	Used for PrepayNeedSomeDay

	of advance notice			
Hour2	Number of hours for the second stage of advance notice	Int	Y	Used for PrepayNeedSomeDay
DateNum	Specific cancellation date	Date	Y	Used for PrepayNeedOneTime
Time	Specific cancellation time	Time	Y	
DeductFees Before	Whether to deduct fees before the change time	Int	Y	For the DeductFeesBefore deduction type before Hour in PrepayNeedSomeDay (usually no penalty), 1 indicates deduction and 0 indicates no deduction.
DeductNum Before	Amount or percentage of fees deducted before the change time	Decimal	Y	
CashScaleFirstAfter	Deduction type after the	Enum	Y	Money: amount, Percent: percentage, FristNight: first night. Used for PrepayNeedOneTime.

	change time			
DeductFeesAfter	Whether to deduct fees after the change time	Int	Y	For the DeductFeesAfter deduction type between Hour and Hour2 in PrepayNeedSomeDay, 1 indicates deduction and 0 indicates no deduction.
DeductNumAfter	Amount or percentage of fees deducted after the change time	Decimal	Y	
CashScaleFirstBefore	Deduction type before the change time	Enum	Y	Money: amount, Percent: percentage, FristNight: first night. Used for PrepayNeedSomeDay.

### PrepayResult

Parameter	Comment	Type	Optional	Description
CancelDescription	Cancel rule	String	N	
LadderParseList	Cancellation rule details	LadderParse[]	N	Refer to the LadderParse node.

### GuaranteeResult

Parameter	Comment	Type	Optional	Description
CancelDescri	Cancel rule	String	N	

ption				
NeedGuarantee	Whether guarantee is required	Boolean	N	
GuaranteeMoney	The amount of the guarantee	Double	Y	
LadderParseList	Cancellation rule details	LadderParse[]	Y	Refer to the LadderParse node.

## Invoice

Parameter	Comment	Type	Optional	Description
InvoiceType	Invoice type	Enum	N	Added in v1.31. Paper-paper invoice, Electronic-electronic invoice, SpecialPaper-special invoice.
TitleType	Title type	Enum	N	Personally-individual, Enterprise-enterprise, Government-government agencies and administrative units, default is enterprise; For Personally, no need to fill in the title (the default is personal) and tax identification number / unified social credit code ITIN; For Enterprise, must fill in the title and tax identification number / unified social credit code ITIN; For Government, must fill in the title.
Title	Title	String(200)	N	
ITIN	Tax identification number	String(20)	N	The character length is 15, 18 or 20 digits, which is a combination of numbers and letters or pure digits.

	/ unified social credit code			
ItemName	Invoice content	String(100)	N	Booking room fee or booking accommodation fee
Amount	Amount	Decimal	N	
Recipient	Recipient	Recipient	N	Refer to the Recipient node.
IsNeedRelationOrder	Whether to add invoice remarks	Boolean	Y	true-add hotel reservation information (hotel name, check-in date, check-out date, number of rooms) in the invoice remark column; false-do not add, default value
MemorInfo	Invoice remark content	String(200)	Y	Remarks added on the invoice
Status	Paper invoice status	Boolean	N	False-unprocessed, true-issued
DeliveryStatus	Paper invoice mailing status	Boolean	N	False-not mailed, true-mailed
ProcessType	Electronic invoice processing type	Integer	Y	Added in v1.31. 0 issuance, 1 red, 2 modification
ProcessStatus	Electronic	Integer	Y	Added in v1.31. 0 unprocessed, 1 processing,

s	ic invoice processi ng status			2 success, 3 failure
UrlForPDF	Electron ic invoice PDF downlo ad URL	String( 500)	Y	Added in v1.31.
UrlForWeixin Card	Link URL for adding electron ic invoices to WeChat card packag e	String( 2000)	Y	Added in v1.31. This link can be converted into a QR code for users to scan, and the electronic invoice will be automatically added to the WeChat card package after scanning.
InvCode	Electron ic invoice invoice code	String( 50)	Y	Added in v1.31.
InvNumber	Electron ic invoice invoice number	String( 50)	Y	Added in v1.31.
BillNumber	Electron ic	String( 50)	Y	Added in v1.31.



	invoice bill number			
TaxPayerNum	Tax identific ation number	String	Y	Required for special invoice
TaxRegisterBank	Openin g bank	String	Y	Required for special invoice
RegisterBankNum	Bank account number	String	Y	Required for special invoice
RegisterAddress	Register ed address	String	Y	Required for special invoice
RegisterPhoneNum	Telepho ne	String	Y	Required for special invoice

### Recipient

Parameter	Comment	Type	Optional	Description
Province	Province	String(20)	N	
City	City	String(20)	N	
District	District	String(50)	N	
Street	Street	String(200)	N	
PostalCode	Postal code	String(10)	Y	
Name	Recipient name	String(50)	N	
Phone	Phone number	String(50)	N	
Email	Email	String(50)	Y	

### DayPromotion

Parameter	Comment	Type	Optional	Description
Date	Date	String	N	
Promotions	Promotions information	Promotion[]	N	Refer to the Promotion node.

### Promotion

Parameter	Comment	Type	Optional	Description
PriceDiscountValue	Discount on selling price	Decimal	Y	
PromotionTag	Promotion name	String	Y	
PromotionId	ID of promotion	Long	Y	
PromotionType	Type of promotion	Integer	Y	0: undefined; 1: daily special price; 2: new customers of the store; 3: premium membership; 4: other promotions; 5: benefits cloud.

### OrderDetailDayRoomPromotion

Parameter	Comment	Type	Optional	Description
PriceDiscountValue	Discount on selling price	Decimal	Y	
PromotionTag	Promotion name	String	Y	

PromotionId	ID of promotion	Long	Y	
PromotionType	Type of promotion	Integer	Y	0: undefined; 1: daily special price; 2: new customers of the store; 3: premium membership; 4: other promotions; 5: benefits cloud.

### PromotionDayRoom

Parameter	Comment	Type	Optional	Description
StayDate	Promotion date	String	N	Format: yyyy-MM-dd
PromotionDayRoom	Promotion day detail	PromotionDayRoom[]	N	

### PromotionDayRoom

Parameter	Comment	Type	Optional	Description
RoomNumber	Room number	String	N	Room number
PromotionDetailList	Promotion details	PromotionDayRoomItem[]	N	Promotion details

### PromotionDayRoomItem

Parameter	Comment	Type	Optional	Description
Amount	Promotion amount	Decimal	N	Promotion amount
PromotionType	Promotion type	Integer	N	9: instant discount; 11: red envelope.

### Contact

Parameter	Comment	Type	Optional	Description
Name	Name	String(50)	N	
Email	Email	String(50)	Y	

Mobile	Mobile	String(50)	Y	
Phone	Phone	String(50)	Y	
Fax	Fax	String(50)	Y	
Gender	Gender	Enum	Y	Female for female, Male for male, Unknown for undisclosed.
IdType	ID type	Enum	Y	IdentityCard for identity card, Passport for passport, Other for other certificates.
IdNo	ID number	String(20)	Y	
FirstName	First name	String	N	outside-china-mainland-specific field.
LastName	Last name	String	N	outside-china-mainland-specific field.

### CreditCard

Parameter	Comment	Type	Optional	Description
ProcessType	Transaction type	Enum	Y	Auth: authorization; CancelAuth: cancel authorization; Charge: charge after authorization; Refund: refund; DirectCharge: direct charge.
Status	Transaction status	Enum	Y	UnProcess: unprocessed; Succeed: succeeded; Processing: processing; Fail: failed.
Amount	Transaction	Decim	Y	Added in v1.07. Note that for prepayment orders, when the ProcessType is Refund, the

	amount	al		amount here may not be the actual refund amount. You also need to check the RefundAmount field. For specific logic, please refer to <a href="#">问答详情-艺龙开放平台</a> .
Notes	Remarks or failure reasons	String	Y	Added in v1.19 (only for use in new payment process for order creation).
IsPayable	Whether it can continue to be paid	Boolean	Y	Added in v1.19 (only for use in new payment process for order creation). If it can be paid, please use hotel.order.pay to complete the payment.
LatestPayTime	Latest payment time	DateTime	Y	Added in v1.19 (only for use in new payment process for order creation). The order will be automatically cancelled after the latest payment time has passed.
ExpirationYear	Expiration year	Int	Y	Deprecated, with a default value of 0.
ExpirationMonth	Expiration month	Int	Y	Deprecated, with a default value of 0.
IdType	ID type	String	Y	Deprecated, with a default value of IdentifyCard.

### NightlyRate

Parameter	Comment	Type	Optional	Description
Date	Date	Date	N	
Member	Member selling	Decimal	N	

	price			
Cost	Settlement price	Decimal	Y	Only available in settlement price mode.
BreakfastCount	Number of breakfasts	Int	Y	Added in v1.24.
AddBed	Additional bed price	Decimal	Y	Deprecated, with a default value of 0.
Status	Status	Boolean	N	Deprecated, with a default value of false.
TaxAndServiceFee	Tax and service fee in original currency	Decimal	Y	outside-china-mainland-specific field.
TaxAndServiceFeeRMB	Tax and service fee in RMB	Decimal	Y	outside-china-mainland-specific field.
roomRate	Room rate	Decimal	Y	outside-china-mainland-specific field.

### ExtendInfo

Parameter	Comment	Type	Optional	Description
String1		String(2)	Y	Can store some information of partners'

		00)		own (API will not change this information), which is conducive to channel analysis after obtaining orders, etc.
String2		String(200)	Y	
String3		String(200)	Y	
Int1		Int	Y	
Int2		Int	Y	
Int3		Int	Y	
PartnerParameter		String(200)	Y	Added in v1.13: parameters passed in by Web.

### OrderRoom

Parameter	Comment	Type	Optional	Description
Customers	Customer information	Customer[]	N	Refer to the Customer node.
RoomNo	Room number at check-in	String	Y	Added in v1.20.

Parameter	Name	Type	Optional	Description
Name	Name	String(50)	N	The name of the person
Email	Email	String(50)	Y	No longer in use
Mobile	Mobile	String(50)	Y	No longer in use
Phone	Phone	String(50)	Y	No longer in use

Fax	Fax	String(50)	Y	No longer in use
Gender	Gender	Enum	Y	The gender of the person
IdType	ID type	Int	Y	No longer in use
IdNo	ID number	String(50)	Y	No longer in use
Nationality	Nationality	String(50)	Y	The nationality of the person
ConfirmationNumber	Hotel confirmation number	String(50)	Y	The hotel's own order number

#### OrderHotel

Parameter	Comment	Type	Optional	Description
HotelId	Hotel ID	String(8)	N	
Name	Hotel Name	String(100)	N	
Address	Hotel Address	String(100)	N	
Phone	Hotel Phone	String(20)	Y	
CityName	City Name	String(10)	N	
HotelEnglishName	Hotel English Name	String	Y	outside-china-mainland-specific field
HotelCountryName	Country Name	String	Y	outside-china-mainland-specific field
HotelLatitude	Latitude	Decimal	Y	outside-china-mainland-specific field
HotelLongitude	Longitude	Decimal	Y	outside-china-mainland-specific field

#### BoardInfo

Parameter	Comment	Type	Optional	Description
IsBreakfastIncluded	Whether breakfast is included	Boolean	Y	outside-china-mainland-specific field
halfBoardIncluded	Whether half board is included	Boolean	Y	outside-china-mainland-specific field



fullBoardIncluded	Whether full board is included	Boolean	Y	outside-china-mainland-specific field
BoardDesc	Description of meal plan	String	Y	outside-china-mainland-specific field
boardDetails	Details of meal plan	BoardDetail[]	Y	outside-china-mainland-specific field, see reference to BoardDetail

### BasePrepayRule

Parameter	Comment	Type	Optional	Description
Description	Description	String	Y	outside-china-mainland-specific field

### GiftPackage

Parameter	Comment	Type	Optional	Description
PkgProductId	Gift Package ID	Long	N	Associated with RatePlan.PkgProductids
PkgType	Gift Package Type	Int	N	0: gift package; 1: package
PkgProductName	Gift Package Name	String	Y	
RuleDescriptionAdditional	Additional Rules	String	Y	
Pictures	Gift Package Pictures	Picture []	Y	See reference to Picture node
XProducts	X Product List	XProduct[]	Y	See reference to XProduct node

### BoardDetail

Parameter	Comment	Type	Optional	Description
Description	Description	String	Y	outside-china-mainland-specific field
Count	Count of	Int	Y	outside-china-mainland-specific

	meal			field
Type	type of meal	Int	Y	1: Breakfast; 2: Lunch; 3: Dinner; 0: Unknown meal type;outside-china-mainland-specific field

### Xproduct

Parameter	Comment	Type	Optional	Description
XProductId	Id of x product	Long	N	X product ID
XProductName		String	N	
TypeName	Type of X product	String	Y	
Quantity	Quantity of X product	String	Y	
ReceptionTimes	Reception time of X product	String	Y	
Capacity	Capacity of X product	String	Y	
BookingPhone	Reservation phone of X product	String	Y	
AppointPolicy	Reservation rules of X product	String	Y	

### Picture

Parameter	Comment	Type	Optional	Description
-----------	---------	------	----------	-------------

ImgIndex	Gift Image Order	Int	N	
ImgUrl	Gift Image URL	String	N	

### DayMeal

Parameter	Comment	Type	Optional	Description
date	Meal Date	String	N	Format: yyyy-MM-dd, for example: 2021-08-12.
useDynamicMeal	Use Dynamic Meal	Boolean	N	If true, use dynamicMealDesc; if false, use breakfastDesc, lunchDesc, and dinnerDesc.
dynamicMealDesc	Dynamic Meal Desc	String	Y	For example: 3 meals (choose 2).
breakfastShare	Breakfast Quantity	Int	N	For example: 0.
breakfastDesc	Breakfast Desc	String	Y	
lunchShare	Lunch Quantity	Int	N	For example: 1.
lunchDesc	Lunch Desc	String	Y	For example: 1 lunch.
dinnerShare	Dinner Quantity	Int	N	For example: 2.

dinnerDesc	Dinner Desc	String	Y	For example: 2 dinners.
dayMealDesc	Day Meal Description	String	Y	For example: 2 breakfasts per room.

### RefundDetail

Parameter	Comment	Type	Optional	Description
refundAmount	Total Refund Amount	Double	N	
refundDetails	Refund Details	Refund[]	N	Reference to the Refund node.

### Refund

Parameter	Comment	Type	Optional	Description
refundAmount	Refund Amount	Double	N	
refundTime	Refund Time	Date	N	

### Request Example

```
https://api-test.elong.com/rest?timestamp=1489648630&format=json
&method=hotel.order.detail&signature=759daf8670f20ac4a274f7981264765d
&user={userid}&data={"Version":"1.28","Local":"zh_CN","Request":{"OrderId":"400002545"
}}
```

## Response Example

```
{
  "Code": "0",
  "Result": {
    "ElongCardNo": "190000002101111111",
    "Contact": {
      "Name": "李海",
      "Email": "",
      "Mobile": "13800138000",
      "Phone": "",
      "Fax": "",
      "Gender": "Unknown"
    },
    "NightlyRates": [
      {
        "Member": 179.0,
        "Cost": -1.0,
        "Status": false,
        "AddBed": 0.0,
        "Date": "2016-01-26T00:00:00 08:00",
        "BreakfastCount": 0
      }
    ],
    "OrderRooms": [
      {
        "Customers": [
          {
            "Name": "李海",
            "Email": "",
            "Mobile": "",
            "Phone": "",
            "Fax": "",
            "Gender": "Unknown"
          }
        ]
      }
    ],
    {
      "Customers": [
        {
          "Name": "张江",
          "Email": "",
          "Mobile": "",
          "Phone": "",
          "Fax": ""
        }
      ]
    }
  }
}
```

## Notes

About penalty and refund amount for prepayment orders:

When a guest needs to cancel a order before check-in, a penalty will be charged according to the policy. The order will be cancelled and the penalty amount will be showed in the PenaltyToCustomer .

If the guest has already checked in but needs to shorten the stay and the hotel agrees to give a refund (otherwise no action is required), the order status will remain "paid", the total order amount will not change, and the refund amount will be showed in the RefundAmount .

Explanation of the differences between "Zhen Xuan Te Hui" and "Tong Cheng Cu Xiao":

"Tong Cheng Cu Xiao" refers to promotions offered by our supplier, while "Zhen Xuan Te Hui" is a promotion offered by the hotel itself, with Tong Cheng as a participating party.

Instructions for using gift packages (GiftPackage node):

The GiftPackage.PkgProductname field should be used as the title of the gift package in the room product. The PkgType field can be used as the type of the gift package. For example, if PkgType is 0, it can be displayed as "Gift Package".

In the gift package details page, display the specific information of each category of X products (XProduct) according to the category (TypeName):

Use the XProductName and Quantity fields of each X product in that category to create a title for that category, such as "X Product A 1 per day + X Product B 1 per day". The type of the X product (TypeName) can be displayed before the title of each X product.

Under the title of each X product, display its usage instructions (XProductName+UsageDescription).

Display other details of the X product, such as AppointPolicy, ReceptionTimes, Capacity, and BookingPhone if applicable. If these fields are empty, they can be omitted.

After displaying all X products, display the additional rules and descriptions of the gift package (GiftPackage.RuleDescriptionAdditional). Display any images included in the GiftPackage.Pictures field under the "Text and Image Description" section. The images should be displayed in order of Picture.ImgIndex.

### Common error codes:

Error Code	Explanation	Solution
H000997	Unknown exception	Retry, contact technical support if the error persists.

## Order Increment

### Method Name

hotel.incr.order

## Description

This api only synchronizes changes in the following order statuses: N (new), A (confirmed), F (checked in), C (settled), Z (deleted and replaced with another hotel), D (deleted), B (no show), O (full occupancy), G (price change), U (special full occupancy), H (change), B1 (reservation not found), B2 (pending confirmation), B3 (not confirmed), S (special), E (cancelled).

If you receive an update for the same status, it may be due to an internal change in the status or other data changes in the order.

To use this interface, please use it in conjunction with the hotel.incr.id interface. The hotel.incr.id interface can obtain the last update ID, and 0 can be used for LastId when using this interface for the first time.

In the testing environment, order status can be modified manually and then synchronized through this interface.

## Request parameters

### Root

Parameter	Comment	Type	Optional	Description
LastId	Last Update ID	Long	N	
Count	Number of Records	Integer	Y	Default: 1000; maximum value: 5000.

## Response

### root

Parameter	Comment	Type	Optional	Description
Orders	Order Increment	Order []	Y	Contains multiple Order nodes.

### Order

Parameter	Comment	Type	Optional	Description
LastId	Incremental id	Long	N	
Time	Time of change	DateTime	N	



OrderId	Order ID	Long	N	
Status	Order status	String(2)	N	Added cancellation status increment in V1.34
ArrivalDate	Check-in date	DateTime	N	
DepartureDate	Check-out date	DateTime	N	
TotalPrice	Total price	Decimal	N	
NumberOfRooms	Number of rooms	Int	N	
AffiliateConfirmationId	Order number passed in from the affiliate	String	Y	Added in V1.29
AllRefundAmount	Order refund amount	Decimal	Y	
PayStatus	Payment status	Int	Y	Added in V1.29;-1 -- No payment information 1 -- Waiting for guarantee or payment 2 -- Guarantee or payment in progress 3 -- Guarantee or payment (or refund) successful 4 -- Guarantee or payment (or refund) failed 5 -- Deferred
IsInstantConfirm	Instant confirmat	Boolean	Y	Indicates whether the order is an instant confirmation. When this field is set to true, the order is

	ion			considered confirmed as soon as its status changes to "V".
--	-----	--	--	--

## Request Example

```
https://api-test.elong.com/rest?timestamp=1489663164&format=json
&method=hotel.incr.order&signature=c58aaf8348cc283d1d694cee474bf27f
&user=Agent1484637655625&data={"Version": "1.28", "Local": "zh_CN", "Request": {"LastId": "26202"}}
```

## Response Example

```
{
  "Code": "0",
  "Result": {
    "Orders": [
      {
        "LastId": 26203,
        "Time": "2017-03-14T17:30:47 08:00",
        "OrderId": 171854958,
        "Status": "A",
        "ArrivalDate": "2017-03-02T00:00:00 08:00",
        "DepartureDate": "2017-03-03T00:00:00 08:00",
        "TotalPrice": 500.0,
        "NumberOfRooms": 1
      }
    ]
  },
  "Guid": "20bc1f4f-06af-40cf-b84b-a21d075d221c"
}
```

## Increment Number

### Method name

hotel.incr.id

## Description

This interface is used to get the LastId of the last update of a certain increment before the input time point. It is used when the LastId of the last update of a certain increment is lost.

Note: This interface does not need to be requested every time an increment is requested.

## Request Parameters

Parameter	Comment	Type	Optional	Description
LastTime	Last Update Time	DateTime	N	The time when the last synchronization was referenced to start synchronizing.
IncrType	Increment Type	Enum	N	Inventory -- inventory change, corresponding to hotel.incr.inv Rate -- price change, corresponding to hotel.incr.rate Order -- order change, corresponding to hotel.incr.order Data -- inventory and price change, corresponding to hotel.incr.data State -- status change, corresponding to hotel.incr.state (deprecated, new one is at interface: <a href="#">hotel.incr.sharding.id</a> , hotel.incr.sharding.state)

## Response

Parameter	Comment	Type	Optional	Description
LastId	Last Update ID	Long	N	Description: the last update ID.

## Request Example

```
https://api-test.elong.com/rest?timestamp=1489990211&format=json
&method=hotel.incr.id&signature=4bc95803a02fa33ce705502965cac567
&user={userid}&data={"Version":"1.28","Local":"zh_CN","Request":
{"LastTime":"2017-03-20 14:10:02","IncrType":"Order"}}
```

## Response Example

```
{
  "Code": "0",
  "Result": {
    "LastId": 26203
  },
  "Guid": "d8b37137-f840-4109-aed2-b17e553af111"
}
```

## Notes

Incremental data in the test environment needs to be manually triggered, so it is recommended not to pass the current time in the test environment.

## Common error codes

<b>Error Code</b>	<b>Explanation</b>	<b>Solution</b>
H0009 97	Unknown exception	Retry, please contact technical support personnel if this error persists.